

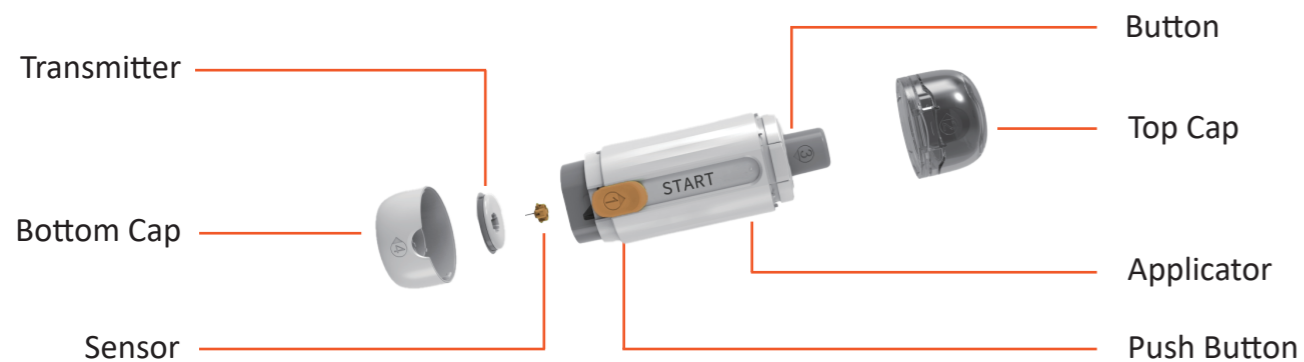
InSight[®] Vet CGM

Continuous Glucose Monitoring System

Quick User Guide



Product Composition



Items Needed



Alcohol Wipes/Swabs
Sanitise your pet's skin and wipe off excessive dirt and oil



Pet Trimmer
(recommend over 40 blades)



Tweezers/Hemostats
(helps CGM insertion & removal)



Skin-Tac/Skin Barrier Wipes
Creates a tacky barrier on your pet's skin and reduces allergy reaction



Cohesive Bandage
(helps CGM stay on)

Service Pack



Overpatch: Helps prevent sensor falling

Steps Overview

1

Download the APP
Register an account

2

Prep the skin

3

Insert sensor
Connect to the APP

4

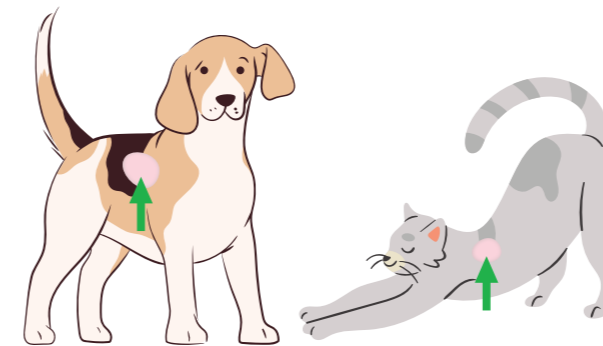
Monitoring

5

Removal

Skin Preparation

If you are using a harness for your pet, please be aware to avoid CGM insertion site



Usual site to shave and apply device

Choose insertion site

We suggest choosing a site that generally stays flat with minimal bending or folding of the skin, and your pet can't scratch or bite.

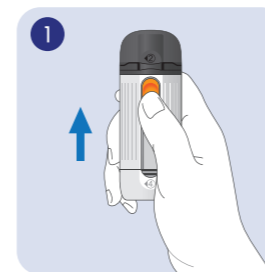
Shave the area with a pet trimmer

Shave a 2 inch to 1.5 inch patch of fur as close to the skin as possible.

Clean the site

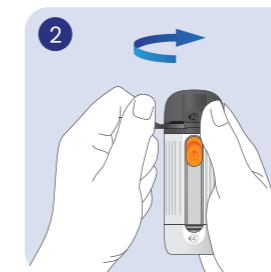
Use alcohol wipe to sanitise. When the site is dry, wipe the site with skin-barrier wipe in one direction. Wait until the site is completely dry before inserting the sensor.

Sensor Insertion



Follow the arrow ①
Push the button upward.

Push to the top until you can't push anymore.

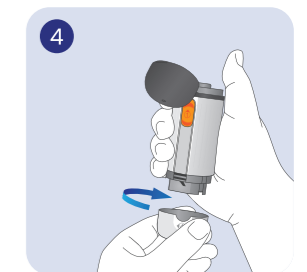


Follow the arrow ②
Tear off the sealing ring and open the top cap.



Follow the arrow ③
Press down the button.

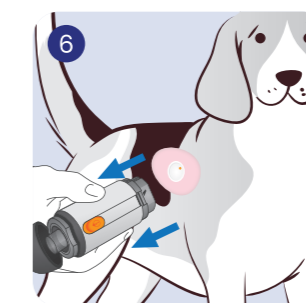
Press until you hear a click sound.



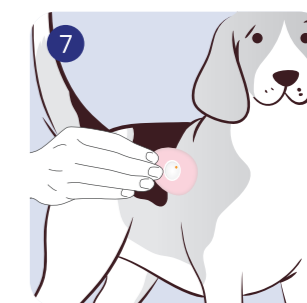
Follow the arrow ④
Unscrew the bottom cap.



Hold applicator against skin. Press the applicator to the desired area.



Hold applicator against the pet's skin for 20 seconds. Then, gently remove the applicator.



Rub around the adhesive tape to make sure the device is firmly attached.

After inserting the sensor, please use the App to pair your sensor.

Secure the Sensor

Recommended Items

Tagaderm/Overpatch

Clothes

Cohesive Bandage

E-Collar/Cone

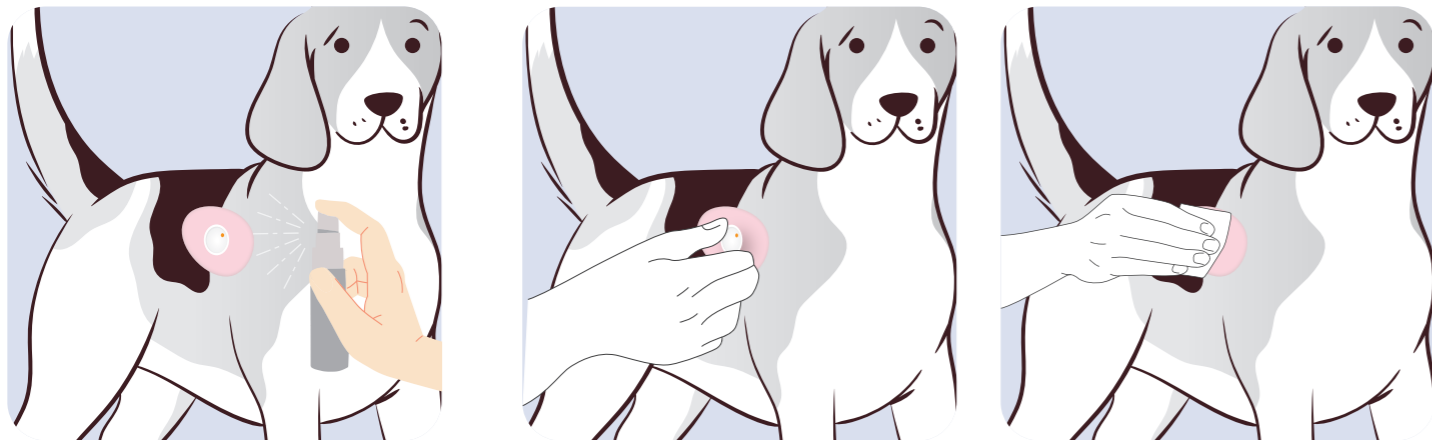
While our CGM is well tolerated by most pets, the duration of use cannot be guaranteed because there is a possibility of pets biting or scratching the device off. Therefore, it is essential to use protective measures to keep the sensor on.

Each pet has different body shapes, personalities and activity levels. We can only provide suggestions and the best reinforcement method needs to be adjusted by the pet owner according to their own pet.

I can bite it off if you don't protect the sensor well



Sensor Removal



Give a light spray of the Adhesive Removal Spray (or similar product) to the sensor and wait a few seconds.

Then, use a Q-tip or tweezers to gently remove the sensor off your pet's skin.

After removing the device, you can give your pet a bath or use wet gauze to completely remove any leftover residue.

**Inappropriate removal of the sensor may cause skin irritation.
Diabetic pet's skin is very delicate!**

Warnings

Without confirming glucose readings using a Blood Glucose Meter, Insulin therapy should NOT be changed in the event of unexpected or unusual glucose readings. Skin irritation may occur from a reaction to the adhesive pad or glue used. Accuracy may vary in the hypoglycemic range due to limitation of CGM technology. Protective measures like clothing, harnesses, vests, e-collars, cones etc. should be used to ensure sensor stays on. While well tolerated by most pets, duration of use cannot be guaranteed and biting or scratching the device off is possible.

Specifications

Sensor Life	Up to 14 days
Reading Intervals	Every 3 minutes
Glucose Range	180 - 756 mg/dL 2.0 - 42.0 mmol/L
Protection Rating	IP27
Operating Temperature	+5°C to +40°C +41°F to +104°F
Sensor Size	22 x 4 mm

Support

For further support

UK

Email:
techsupport@woodleyequipment.com

International

Please contact your local authorised distributor.

Download App

Please scan the QR Code
to download the app



WOODLEY
EQUIPMENT COMPANY LTD.

Old Station Park Buildings, St. John Street, Horwich, Bolton, BL6 7NY, UK

Tel: +44 (0) 1204 669033

Email: sales@woodleyequipment.com

Web: www.woodleyequipment.com