

ENERGY PRODUCT CATALOGUE



**Valleylab™ Energy
stands for confidence**

CONTENTS

■ GENERATORS AND HARDWARE ACCESSORIES	01
Generators	01
Valleylab™ FT10 Energy Platform	01
Valleylab™ FX8 Energy Platform	01
Valleylab™ LS10 Vessel Sealing Generator	02
Software Applications for ForceTriad™ Energy Platform	03
Bipolar Resection	03
The Remote Control Application	04
Hardware Accessories	05
Footswitches	05
Carts and Stand	06
Carts and Accessories	07
■ LIGASURE™ TISSUE FUSION	08
LigaSure™ Tissue Fusion Instruments, Sterile, Single Use	08
For Open Procedures	11
■ ULTRASONIC DISSECTION	13
Sonicision™ Curved Jaw Cordless Ultrasonic Dissection System	13
■ BIZACT™ TONSILLECTOMY DEVICE	15
BiZact™ Tonsillectomy Device	15
■ ELECTROSURGERY	16
Valleylab™ Mode Products, Sterile, Single Use	16
Electrosurgical Pencils, Sterile, Single Use	17
With EDGE™ Coated Electrode	17
With Stainless Steel Electrode	18
With Arthroscopic Electrode	20
Electrosurgical Pencil and Accessories	21
Suction Coagulators, Sterile, Single Use	22
Electrosurgical Electrodes, Sterile, Single Use	23
EDGE™ Coated Electrodes	23
Tungsten Microsurgical Needle Electrodes	26
LLETZ Electrodes	28
Stainless Steel Electrodes	29
CleanCoat™ Laparoscopic Electrodes, Sterile, Single Use	30
Solid Laparoscopic Electrodes	30
Arthroscopic Electrodes	31
Electrosurgical Electrodes, Non-Sterile, Reusable	32
Stainless Steel Electrodes	32
Electrode Extensions	33
Electrosurgical Accessories, Sterile, Single Use	34
Tip Cleaner, Holster	34
Patient Return Electrodes, Non-Sterile, Single Use	35
Corded	35
Non-Corded	36

Patient Return Electrode Cord	37
Foot Switching Bipolar Forceps, Non-Sterile, Reusable	38
Bipolar Coagulation Scissors, Non-Sterile, Reusable	40
Electrosurgical Accessories, Sterile, Single Use	41
Cords	41
Electrosurgical Accessories, Non-Sterile, Reusable	42
Bipolar Cords	42
Electrosurgical Accessories, Non-Sterile, Reusable, Monopolar Cords	44
Electrosurgical Accessories, Non-Sterile, Reusable	45
Adapters	45
Electrosurgical Accessories	46
E0504-2 Non-REM™ Patient Return Electrode Adapter Quick Reference Index	46
Monopolar Cord Quick Reference Index	47
Bipolar Cord Quick Reference Index	47
Laparoscopic Instruments, Sterile, Single Use	48
Opti4™ Handset and Retractable Hollow Laparoscopic Electrodes	48
Opti4™ Non-Retractable Hollow Laparoscopic Electrodes	49
Argon-Enhanced Electrosurgery	50
Argon 4 Plasma coagulator System and Accessories	50
Argon-Enhanced Electrosurgery, Sterile, Single Use	51
Argon Plus™ Handset	52
Argon Plus™ Electrodes	53
Smoke Evacuation Products	54
RapidVac™ Smoke Evacuation System and Accessories	54
Smoke Evacuation Products, Sterile, Single Use	55
RapidVac™ Tubing	55
Smoke Evacuation Pencils and Attachments	56
Smoke Evacuation Products	57
OptiMumm™ Smoke Evacuation Accessories	58
Smoke Evacuation Accessories	59
 ELECTROSURGICAL PENCIL QUICK REFERENCE INDEX	60
 SMOKE EVACUATION PENCIL QUICK REFERENCE INDEX	61
 VISUALISATION SOLUTIONS	62
EleVison™ HD1 System	70
EleVision™ IR Platform	64
 INDEX	67
Catalogue Number	67
Product Name	70



The Medtronic Energy division, a world leader in radiofrequency (RF) energy-based systems, is committed to providing you with a complete line of products that contribute to the safest possible surgical environment.

We manufacture a full range of RF energy products – electrosurgical and tissue fusion generators, pencils, patient return electrodes and an entire line of accessories. Our fully integrated systems set the industry standard in patient care and purchasing efficiency.

Abbreviation legend

- ASP = Aspiration holes
- B = Safety Sleeve™
- DA = Needle electrode
- DB = 15 ft cord
- FR = French
- H = Holster
- R = Retractable
- S = Smoke attachment

Generators

VLFT10GEN

1 EACH

Valleylab™ FT10 Energy Platform

The Valleylab™ FT10 energy platform not only drives our full portfolio of energy-based devices, it makes them better than ever. The Valleylab™ FT10 energy platform delivers precise amounts of energy.



- Improved and enhanced LigaSure™ vessel sealing performance*
- TissueFect™ tissue sensing technology has improved on the Valleylab™ FT10 energy platform with closed-loop control at 434,000 data points per second, which is over a 100x more than the ForceTriad™ energy platform.⁵ This creates a more consistent tissue effect
- Automatic instrument recognition
- Utilizes most current and all new LigaSure™ instruments
- Single, simplified touch screen
- Exclusive Valleylab™ exchange software update system
- Unique Valleylab™ mode
- Adaptive REM™ system
- Automatic power settings require minimal setup and minimize need for further handling during surgery
- Bipolar cable compensation reads cable length and width for consistent electrosurgical output
- Autobipolar capability
- Soft coag settings
- Weight (kg): 10,1
- Width (cm): 36,8
- Height (cm): 17,8
- Depth (cm): 46,2

* As compared to the ForceTriad™ energy platform

VLFX8GEN

1 EACH

Valleylab™ FX8 Energy Platform

The newest addition to Valleylab™ energy is made to enhance the performance of your electrosurgical handpieces.^{1,2,†} The Valleylab™ FX8 energy platform is driven by our intelligent tissue-sensing technology. As you use your energy-powered tools, it reads tissue composition to monitor and adjust to impedance.^{3,4}



- TissueFect™ sensing technology monitors changes in tissue impedance 434,000 times a second
- Automatic instrument recognition
- Single, simplified touch screen
- Exclusive Valleylab™ exchange software update system
- Unique Valleylab™ mode
- Adaptive REM™ system
- Automatic power settings require minimal setup and minimize need for further handling during surgery
- Bipolar cable compensation reads cable length and width for consistent electrosurgical output
- Autobipolar capability
- Soft coag settings
- Weight (kg): 8,8
- Width (cm): 33,5
- Height (cm): 14,6
- Depth (cm): 43,6

† Compared to the ForceTriad™ energy platform

1. Based on internal test report #RE00005401, Product validation of Valleylab™ FT10 energy platform surgeon and nurse evaluation in simulated use: 32 surgeons interviewed. January 27 to 30, 2015 and Feb. 24 to 27, 2015.
 2. Based on internal report #RE00105221, Comparison testing of the Valleylab™ FT10 and ForceTriad™ generators. The Valleylab™ FT10 energy platform has identical power curves and equivalent power delivery for shared modes to the Valleylab™ FX8 energy platform. July 2017.
 3. Valleylab™ FX8 energy platform part #PT00053621 [user guide]. Boulder, CO: Medtronic. June 2017.
 4. Based on report #RE00034263 Rev F, Product requirements document for project Kirin. July 2017.
 5. Based on the Valleylab™ FT10 Service Manual: part number 1079477, REV 01/2015.

Generators

VLLS10GEN

1 EACH

Valleylab™ LS10 Vessel Sealing Generator

A simple, portable, 'plug and play' generator, designed to give you control, confidence and consistency in the OR.



- Single power on/off button
- Single instrument plug in port, compatible with all LigaSure™ devices
- Weighs only 5,5 kg for ease of transportation
- Automatic instrument recognition
- Seals vessels up to and including 7 mm in size, lymphatics and tissue bundles when used with a proper LigaSure™ instrument
- Produces minimal sticking, charring and thermal spread to adjacent tissue when used with a proper LigaSure™ instrument

- 95% certainty that the seals will withstand minimum 3x normal systolic blood pressure when used with a LigaSure™ instrument
- RFID (radio frequency identification) technology for automatic software upgrades²
- Depth (cm): 46,2
- Improved and enhanced LigaSure™ vessel sealing performance*
- TissueFect™ sensing technology monitors changes in tissue impedance 434,000 times a second

*As compared to the ForceTriad™ energy platform

TissueFect™ Tissue Sensing Technology

The smart TissueFect™ tissue sensing technology in our Valleylab™ LS10 Generator and FT10 energy platform improves the speed and maintains consistency of hand-held devices by reading tissue composition in real time. So you can move through procedures more efficiently, for a better experience.

In the case of the Valleylab™ FT10 and FX8 energy platforms, TissueFect™ technology examines device performance 434,000 times per second, monitoring tissue impedance and allowing effective and efficient energy delivery. This technology is only available on Valleylab™ generators and drives all electro-surgical and advanced bipolar functions.

Valleylab™ Exchange Software Update System

The Valleylab™ exchange software update system enables you to perform a first-time setup or update software on Medtronic energy-based devices. This ensures that your surgeons and staff have access to the latest performance features as new features and energy delivery profiles become available for your electro-surgical generator. The Valleylab™ exchange software update system is available for the ForceTriad™, Valleylab™ FT10 and FX8 energy platforms, and the Valleylab™ LS10 generator.

Valleylab™ Mode

Valleylab™ mode provides a unique combination of monopolar hemostasis and dissection.

Power Efficiency Rating (PER)

Measure of the ability of an electro-surgical generator to accurately deliver the selected power into a wide range of impedances.

Adaptive REM™ System

Adaptive REM™ combines the feedback circuitry of hardware monitoring with an advanced software-controlled adaptation feature. The adaptive system still maintains the 5-135 ohms limits, but also creates a window of acceptable impedances based on contact conditions of the individual patient.

Software Applications for ForceTriad™ Energy Platform

Bipolar Resection

The Bipolar Resection Activation Kit enables activation of the bipolar-resection application on a single ForceTriad™ energy platform with software version 3.30 or greater.

The application is intended for use in the following procedures in a saline environment: Transurethral Resection of the Prostate (TURP), Transurethral Resection of the Bladder (TURB) and hysteroscopic resection.



FTBRKIT

1 EACH

Bipolar Resection Activation Kit for the ForceTriad™ Energy Platform

- Telephone and email contact information for EbD Technical support – to be contacted for activation of this Software application
- RS232 Cable for connecting the ForceTriad™ energy platform to the biomed PC (for Valleylab™ exchange)
- License Key Code to be provided to tech support
- CD-Rom with user guides
- Three labels to be applied to the ForceTriad™ energy platform after activation of the software application



FT6009

1 EACH

Bipolar Resection Footswitch

- Activates the bipolar resection – resection in Saline
- 4,6 m cord
- To be used with the ForceTriad™ energy platform

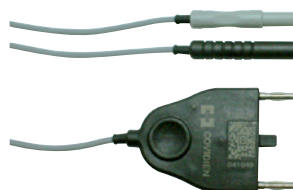


FT0021S

1 EACH

Storz™ Bipolar Resection Cord

- To be used with Storz™ bipolar resectoscopes
- To be used with the ForceTriad™ energy platform
- Reusable
- 4,6 m cord



FT0022W

1 EACH

Wolf Bipolar Resection Cord

- To be used with Wolf bipolar resectoscopes
- To be used with the ForceTriad™ energy platform
- Reusable
- 4,6 m cord

Software Applications for ForceTriad™ Energy Platform



STORZBRSET 1 EACH

Starter Kit for use with Storz™ Resectoscopes

Contains:

- FTBRKIT Activation Kit Bipolar Resection 1 each
- FT6009 Bipolar Resection Footswitch 1 each
- FT0021S Bipolar Resection Cord Storz™ 1 each



WOLFBRSET 1 EACH

Starter Kit for use with Wolf Resectoscopes

Contains:

- FTBRKIT Activation Kit Bipolar Resection 1 each
- FT6009 Bipolar Resection Footswitch 1 each
- FT0022W Bipolar Resection Cord Wolf 1 each
- Remote access panel assembly (panel with 2 screws)

The Remote Control Application

The Remote Control Application is add-on software that enables communication between a ForceTriad™ energy platform and a third-party remote-control system.

Once the application has been activated, an energy platform can be integrated into a system of multiple hardware components operated from a central location.

Remote-control systems are used in integrated operating rooms to control medical devices and various audio, video, and communication devices from a central communication console.

This application needs Software Version 3.4 or higher.



FTRCKIT 1 EACH

Activation Kit Remote Control for the ForceTriad™ Energy Platform

- CD with the User's Guide Supplement - remote control application
- License Key (provided on the inner box label and internal packaging)
- RS-232 cable
- Remote access panel assembly (panel with 2 screws)

Hardware Accessories

Footswitches



FT6003 1 EACH

ForceTriad™ Energy Platform Three-Pedal Footswitch

Compatible with ForceTriad™ energy platform only

- Enables foot activation of Cut, Valleylab™ mode and Coag
- Activate Valleylab™ mode and Force TriVerse™ electrosurgical device
- Enables foot activation of Cut and Coag on standard electrosurgical pencils
- 4,6 m (15 ft) cord



FT6009 1 EACH

Bipolar Resection Footswitch

Compatible with the Valleylab™ FT10 and ForceTriad™ Energy platforms

- Activates the bipolar resection – resection in saline
- 4,6 m (15 ft) cord

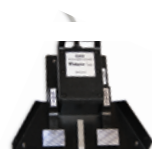


E6008B 1 EACH

Monopolar Footswitch

Compatible with SurgiStat™ II, Valleylab™ FT10 and all Force™ Series generators

- 4,6 m (15 ft) cord



E6008 1 EACH

Monopolar Footswitch

Compatible with SurgiStat™ II, Valleylab™ FT10 and all Force™ Series generators

- 4,6 m (15 ft) cord

All footswitches are water resistant



E6009 1 EACH

Standard Bipolar Footswitch

Compatible with Valleylab™ FT10 and FX8 energy platforms and all Force™ Series generators

- 4,6 m (15 ft) cord



LS0300 (PURPLE) 1 EACH

LigaSure™ Single Pedal Footswitch

- 4,6 m (15 ft) cord



LF0500 (ORANGE) 1 EACH

LigaSure™ Single Pedal Footswitch

Compatible with ForceTriad™ energy platform only

- 4,6 m (15 ft) cord



E6019 1 EACH

Dome Bipolar Footswitch

Compatible with Valleylab™ and FT10 and all Force™ Series generators

- 4,6 m (15 ft) cord



E6009B 1 EACH

Standard Bipolar Footswitch (version B)

Compatible with Valleylab™ FT10 and all Force™ Series generators

- 4,6 m (15 ft) cord

Hardware Accessories

Carts and Stand



VLFTCRT

1 EACH

Valleylab™ FT10 Cart

The Valleylab™ FT10 cart is compatible with the Valleylab™ FT10 and FX8 energy platforms and the LS10 generator

- Cord management system
- One storage drawer
- Rust resistant
- Conductive casters (2 locking, 2 non-locking)
- Multiple shelves

Hardware Accessories
Carts and Accessories



UC8009 1 EACH

Universal Mounting Cart

- Rust resistant
- Conductive casters (2 locking, 2 non-locking)
- Supplied with cord management kit



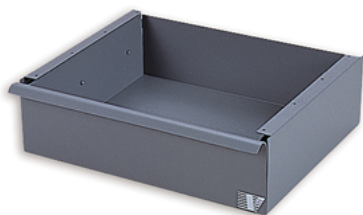
UC8010 1 EACH

Universal Mounting Cart Overshelf

Compatible with UC8009 universal cart

Ideal for a second electrosurgical generator, LigaSure™ vessel sealing system, RapidVac™ smoke evacuation system or Force Argon II™ system

- Supports 75 lbs centered on shelf
- Supplied with cord management kit



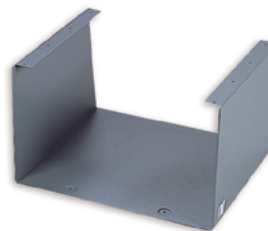
UC8012 1 EACH

Universal Mounting Cart Drawer

Compatible with UC8009 universal cart

Not compatible with UC8013 suspended shelf

Ideal for storing user's manual or extra supplies



UC8013 1 EACH

Universal Mounting Cart Suspended Shelf

Compatible with UC8009 universal cart

Not compatible with UC8012 drawer

Ideal for the RapidVac™ or OptiMumm™ smoke evacuation system or other smoke evacuation systems

- Supports 75 lbs



UC8011 1 EACH

Universal Mounting Cart Cord Management Kit

Compatible with UC8009 universal cart

- Two brackets



UC8015 1 EACH

Universal Mounting Cart Argon Gas Tank Kit

Compatible with UC8009 universal cart

- Holds 2 G-size 42 cubic ft tankss



LF1823 6 UNITS/CASE

LigaSure™ Blunt Tip Open Sealer/Divider 5 mm, nano-coated – 23 cm

Compatible with ForceTriad™, Valleylab™ FT10 and Valleylab™ LS10 generators

- HMDSO nano-coated nonstick jaws
- Sealer/divider
- 5 mm diameter; 23 cm (9 in.) length
- 180 degree shaft rotation
- Blunt jaw, double-action with contoured tips design
- Textured jaw with ceramic stops
- Hand switching or foot switching



LF1923 6 UNITS/CASE

LigaSure™ Maryland Jaw Open Sealer/Divider 5 mm, nano-coated – 23 cm

Compatible with ForceTriad™, Valleylab™ FT10 and Valleylab™ LS10 generators

- HMDSO nano-coated nonstick jaws
- Sealer/divider
- 5 mm diameter; 23 cm (9 in.) length
- 350 degree shaft rotation
- Maryland jaws, single-action with contoured tips design
- Textured jaw with ceramic stops
- One step sealing & foot switching

LF1837 6 UNITS/CASE

LigaSure™ Blunt Tip Laparoscopic Sealer/Divider 5 mm, nano-coated – 37 cm

Compatible with ForceTriad™, Valleylab™ FT10 and Valleylab™ LS10 generators

- HMDSO nano-coated nonstick jaws
- Sealer/divider
- 5 mm diameter; 37 cm (14,6 in.) length
- 180 degree shaft rotation
- Blunt jaw, double-action with contoured tips design
- Textured jaw with ceramic stops
- Hand switching or foot switching

LF1937 6 UNITS/CASE

LigaSure™ Maryland Jaw Laparoscopic Sealer/Divider 5 mm, nano-coated – 37 cm

Compatible with ForceTriad™, Valleylab™ FT10 and Valleylab™ LS10 generators

- HMDSO nano-coated nonstick jaws
- Sealer/divider
- 5 mm diameter; 37 cm (14,6 in.) length
- 350 degree shaft rotation
- Maryland jaws, single-action with contoured tips design
- Textured jaw with ceramic stops
- One step sealing & foot switching

LF1844 6 UNITS/CASE

LigaSure™ Blunt Tip Laparoscopic Sealer/Divider 5 mm, nano-coated – 44 cm

Compatible with ForceTriad™, Valleylab™ FT10 and Valleylab™ LS10 generators

- HMDSO nano-coated nonstick jaws
- Sealer/divider
- 5 mm diameter; 44 cm (17,3 in.) length
- 180 degree shaft rotation
- Blunt jaw, double-action with contoured tips design
- Textured jaw with ceramic stops
- Hand switching or foot switching

LF1944 6 UNITS/CASE

LigaSure™ Maryland Jaw Laparoscopic Sealer/Divider 5 mm, nano-coated – 44 cm

Compatible with ForceTriad™, Valleylab™ FT10 and Valleylab™ LS10 generators

- HMDSO nano-coated nonstick jaws
- Sealer/divider
- 5 mm diameter; 44 cm (17,3 in.) length
- 350 degree shaft rotation
- Maryland jaws, single-action with contoured tips design
- Textured jaw with ceramic stops
- One step sealing & foot switching

All single use instruments and electrodes have a coded connector for instrument recognition

LigaSure™ Tissue Fusion Instruments, Sterile, Single Use



LS1020

6 UNITS/CASE

LigaSure Atlas™ 20 cm Hand Switching Instrument

Compatible with ForceTriad™, Valleylab™ FT10, Valleylab™ LS10 generators and the LigaSure™-8 vessel sealing system

- Sealer/divider
- 10 mm diameter; 20 cm (7,9 in.) length
- 359 degree shaft rotation
- Straight, blunt jaw
- Hand switching or foot switching



LS1520

6 UNITS/CASE

LigaSure™ V 20 cm Instrument

Compatible with ForceTriad™ energy platform and LigaSure™-8 vessel sealing system

- Sealer/divider
- 5 mm diameter; 20 cm (7,9 in.) length
- 159 degree shaft rotation
- Dolphin-nose jaw design
- Hand switching or foot switching



LS1037

6 UNITS/CASE

LigaSure Atlas™ Hand Switching Laparoscopic Instrument

Compatible with ForceTriad™, Valleylab™ FT10, Valleylab™ LS10 generators and the LigaSure™-8 vessel sealing system

- Sealer/divider
- 10 mm diameter; 37 cm (14,6 in.) length
- 359 degree shaft rotation
- Straight, blunt jaw
- Hand switching or foot switching



LS1500

6 UNITS/CASE

LigaSure™ V Laparoscopic Instrument

Compatible with ForceTriad™ energy platform and LigaSure™-8 vessel sealing system

- Sealer/divider
- 5 mm diameter; 37 cm (14,6 in.) length
- 159 degree shaft rotation
- Dolphin-nose jaw design
- Hand switching or foot switching

All single use instruments and electrodes have a coded connector for instrument recognition

LigaSure™ Tissue Fusion Instruments, Sterile, Single Use



LF5637

6 UNITS/CASE

LigaSure™ 37 cm Retractable L-Hook Laparoscopic Device

Compatible with ForceTriad™ and Valleylab™ FT10 generators

- Sealer/divider
- 5 mm diameter; 37 cm (14,6 in.) length
- 315 degree shaft rotation
- Maryland-style jaws
- Retractable monopolar L-hook
- Hand switching

LF5644

6 UNITS/CASE

LigaSure™ 44 cm Retractable L-Hook Laparoscopic Device

Compatible with ForceTriad™ and Valleylab™ FT10 generators

- Sealer/divider
- 5 mm diameter; 44 cm (17,3 in.) length
- 315 degree shaft rotation
- Maryland-style jaws
- Retractable monopolar L-hook
- Hand switching



LF1930T

6 UNITS/CASE

LigaSure™ Maryland Jaw Thoracic Laparoscopic Sealer/Divider 5 mm, nano-coated – 30 cm

Compatible with Valleylab™ FT10 generator version 1.1 or higher version

- HMDSO nano-coated nonstick jaws
- Sealer/divider
- 5 mm diameter; 30cm length
- 350 degree shaft rotation
- Maryland jaws, single-action with contoured tips design
Textured jaw with ceramic stops
- One step sealing & foot switching

LIGASURE™ TISSUE FUSION

LigaSure™ Tissue Fusion Instruments, Sterile, Single Use For Open Procedures



LF4418

6 UNITS/CASE

LigaSure™ Impact Instrument, nano-coated

Compatible with ForceTriad™, Valleylab™ FT10 and Valleylab™ LS10 generators

- HMDSO nano-coated nonstick jaws
- Sealer/divider
- Rectangular shaft; 18 cm (7,1 in.) length
- 180 degree shaft rotation
- 14 degree curved jaw
- Hand switching or foot switching



LF2019

6 UNITS/CASE

LigaSure™ Exact Dissector, nano-coated

Compatible with Valleylab™ FT10 energy platform and Valleylab™ LS10 vessel sealing generator

- HMDSO nano-coated nonstick jaws
- Sealer/divider
- 21 cm instrument length
- Fine tapered jaws
- Hand or foot activation



LF1212

6 UNITS/CASE

LigaSure™ Small Jaw Instrument

Compatible with ForceTriad™, Valleylab™ FT10 and Valleylab™ LS10 generators

- 16,5 mm electrode length
- 18,8 cm instrument length
- 28-degree curved jaw
- Contoured tips for blunt dissection
- Sealer/divider
- Hand or foot activation

All single use instruments and electrodes have a coded connector for instrument recognition

LigaSure™ Tissue Fusion Instruments For Open Procedures



LF3225

3 UNITS/CASE

LigaSure™ Curved Jaw Open Sealer/Divider Electrode Instrument

Compatible with ForceTriad™ energy platform, Valleylab™ LS10 vessel sealing generator, Valleylab™ FT10 energy platform

- Sealer/divider for open procedures Hand or foot switch activated
- 25 mm electrode length
- 25 cm instrument length
- 34 degree curved jaw
- Contoured tips for blunt dissection



LF3225C

1 UNITS/CASE

LigaSure™ Curved Jaw Open Sealer/Divider Clamp Instrument

Requires LF3225 electrode

Electrode is compatible with ForceTriad™ energy platform, Valleylab™ LS10 vessel sealing generator, Valleylab™ FT10 energy platform

- Non-sterile, reusable
- 25 cm length
- 34 degree curved jaw
- Requires LF3225 electrode

All single use instruments and electrodes have a coded connector for instrument recognition

ULTRASONIC DISSECTION

Sonicision™ Curved Jaw Cordless Ultrasonic Dissection System

Cordless ultrasonic vessel sealing and dissection — now with a tapered, curved jaw and streamlined cleaning and sterilization.¹ These dissectors are designed for single use.



SCDA13

6 UNITS/CASE

**Sonicision™ 13 cm Curved Jaw
Cordless Ultrasonic Dissector**



SCDA39

6 UNITS/CASE

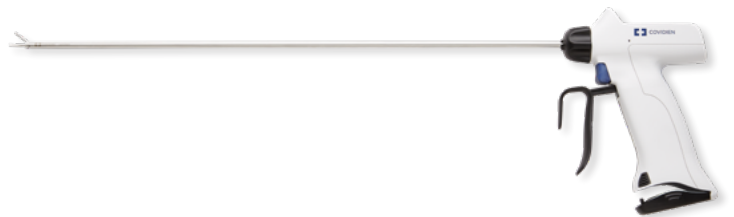
**Sonicision™ 39 cm Curved Jaw
Cordless Ultrasonic Dissector**



SCDA26

6 UNITS/CASE

**Sonicision™ 26 cm Curved Jaw
Cordless Ultrasonic Dissector**



SCDA48

6 UNITS/CASE

**Sonicision™ 48 cm Curved Jaw
Cordless Ultrasonic Dissector**

ULTRASONIC DISSECTION

Sonicision™ Curved Jaw Cordless Ultrasonic Dissection System



SCBA

1 EACH

Sonicision™ Reusable Battery Pack

- It can be reused 200×



CBCA

1 EACH

Sonicision™ Battery Charger



SCGAA

1 EACH

Sonicision™ Reusable Generator

- It can be reused 150×
- Autowashable and autoclavable



SCSTA

1 EACH

Sonicision™ Reusable Sterilization Tray

- It can be reused 150×
- Autowashable and autoclavable



SCBIGA

2 UNITS/CASE

Sonicision™ Reusable Battery Insertion Guide

- It can be reused 150×
- Autowashable and autoclavable

BiZact™ Tonsillectomy Device

BZ4212

6 UNITS/CASE

BiZact™ Tonsillectomy Device

Compatible with ForceTriad™, Valleylab™ FT10 and Valleylab™ LS10 generators

- Sealer/divider
- For vessels and lymphatics up to 3 mm
- 12 cm shaft
- Curved jaws
- Contoured tips for blunt dissection
- Hand switching



Valleylab™ Mode Products, Sterile, Single Use

Valleylab™ Mode



FT3000

25 UNITS/CASE

Force TriVerse™ Electrocautery Device

Compatible with the Valleylab™ FT10, FX8 and ForceTriad™ Energy platforms

- Allows access to Valleylab™ mode
- EDGE™ coated hex-locking blade electrode
- Cut, Coag and Valleylab™ mode
- Accepts all standard 2,4 mm (3/32 in.) shaft electrodes.
- Holster
- 3 m (10 ft) cord
- Sterile-field power control
- Instrument recognition cord connector



FT3000DB

25 UNITS/CASE

Force TriVerse™ Electrocautery Device

Compatible with the Valleylab™ FT10, FX8 and ForceTriad™ Energy platforms

- Allows access to Valleylab™ mode
- EDGE™ coated hex-locking blade electrode
- Cut, Coag and Valleylab™ mode
- Accepts all standard 2,4 mm (3/32 in.) shaft electrodes.
- Holster
- 4,6 m (15 ft) cord
- Sterile-field power control
- Instrument recognition cord connector



FT0510

25 UNITS/CASE

Foot Switching Monopolar Cord Valleylab™ Mode

Compatible with the ForceTriad™ Energy platform

- Connects any surgical instrument with a 4 mm connector to the ForceTriad™ energy platform
- Delivers Valleylab™ mode
- Works with EndoShears, EndoDissectors, Roticulators, reusable lap handles
- 3 m (10 ft)

Electrosurgical Pencils, Sterile, Single Use
With EDGE™ Coated Electrode



E2350H 50 UNITS/CASE

Rocker Switch Pencil

- EDGE™ coated hex-locking blade electrode
- Holster
- 3 m (10 ft) cord



E2450H 50 UNITS/CASE

Button Switch Pencil

- EDGE™ coated hex-locking blade electrode
- Holster
- 3 m (10 ft) cord



E2350H-DB 50 UNITS/CASE

Rocker Switch Pencil

- EDGE™ coated hex-locking blade electrode
- Holster
- 4,6 m (15 ft) cord



E2450HS 50 UNITS/CASE

Button Switch Pencil

- EDGE™ coated hex-locking blade electrode
- AccuVac™ smoke evacuation attachment
- Holster
- 3 m (10 ft) cord



E2350HS 25 UNITS/CASE

Rocker Switch Pencil

- EDGE™ coated hex-locking blade electrode
- AccuVac™ smoke evacuation attachment
- Holster
- 3 m (10 ft) cord



E2250H 50 UNITS/CASE

Foot Switching Pencil

Not compatible with Safety Sleeve™ electrodes or AccuVac™ smoke evacuation attachment

Requires E0502-1 monopolar adapter

- EDGE™ coated hex-locking blade electrode
- Holster
- 3 m (10 ft) cord

Accepts all standard 2,4 mm (3/32 in.) shaft electrodes. See Quick Reference Index on page 68

Electrosurgical Pencils, Sterile, Single Use With Stainless Steel Electrode



E2515 50 UNITS/CASE

Rocker Switch Pencil

- Stainless steel hex-locking blade electrode
- 3 m (10 ft) cord



E2516 50 UNITS/CASE

Button Switch Pencil

- Stainless steel hex-locking blade electrode
- 3 m (10 ft) cord



E2515H 50 UNITS/CASE

Rocker Switch Pencil

- Stainless steel hex-locking blade electrode
- Holster
- 3 m (10 ft) cord



E2516H 50 UNITS/CASE

Button Switch Pencil

- Stainless steel hex-locking blade electrode
- Holster
- 3 m (10 ft) cord



E2515H-DA 50 UNITS/CASE

Rocker Switch Pencil

- Stainless steel needle electrode
- Holster
- 3 m (10 ft) cord



E2516H-DA 50 UNITS/CASE

Button Switch Pencil

- Stainless steel needle electrode
- Holster
- 3 m (10 ft) cord



E2515HDB 50 UNITS/CASE

Rocker Switch Pencil

- Stainless steel hex-locking blade electrode
- Holster
- 4,6 m (15 ft) cord

Accepts all standard 2,4 mm (3/32 in.) shaft electrodes. See Quick Reference Index on page 68

ELECTROSURGERY

Electrosurgical Pencils, Sterile, Single Use With Stainless Steel Electrode



E2515HS

25 UNITS/CASE

Rocker Switch Pencil

- Stainless steel hex-locking blade electrode
- AccuVac™ smoke evacuation attachment
- Holster
- 3 m (10 ft) cord
- 3/8" x 1' tubing with 3/8" tubing connector



E2504

50 UNITS/CASE

Foot Switching Pencil

Not compatible with Safety Sleeve™ electrodes or AccuVac™ smoke evacuation attachment

Requires E0502-1 monopolar adapter

- Stainless steel hex-locking blade electrode
- 3 m (10 ft) cord



E2516HS

25 UNITS/CASE

Button Switch Pencil

- Stainless steel hex-locking blade electrode
- AccuVac™ smoke evacuation attachment
- Holster
- 3 m (10 ft) cord



E2504H

50 UNITS/CASE

Foot Switching Pencil

Not compatible with Safety Sleeve™ electrodes or AccuVac™ smoke evacuation attachment

Requires E0502-1 monopolar adapter

- Stainless steel hex-locking blade electrode
- Holster
- 3 m (10 ft) cord



VL2610

50 UNITS/CASE

Button Switch Pencil

- Stainless steel blade electrode
- Holster
- 3 m (10 ft) cord
- 3 pin connection

VL2610DB

50 UNITS/CASE

Button Switch Pencil

- Stainless steel blade electrode
- Holster
- 4,50 m (15 ft) cord
- 3 pin connection

VL2610E

50 UNITS/CASE

Button Switch Pencil

- Stainless steel blade electrode
- Holster
- 4,50 m (15 ft)
- For Erbe ACC/ICC generators



VL2615

50 UNITS/CASE

Button Switch Pencil

- Ceramic coated blade electrode
- Holster
- 3 m (10 ft) cord
- 3 pin connection

VL2615DB

50 UNITS/CASE

Button Switch Pencil

- Ceramic coated blade electrode
- Holster
- 4,50 m (15 ft) cord
- 3 pin connection

VL2615E

50 UNITS/CASE

Button Switch Pencil

- Ceramic coated blade electrode
- Holster
- 4,50 m (15 ft)
- 1 pin connection

See Quick Reference Index on page 68

Electrosurgical Pencils, Sterile, Single Use With Arthroscopic Electrode



E2510H

10 UNITS/CASE

Rocker Switch Pencil

- Insulated
- Arthroscopic right-angle hook electrode
- Stainless steel
- Total length: 21,6 cm (8,5 in)
- Active length: 0,19 cm (0,075 in)
- Holster
- 3 m (10 ft) cord

Accepts all standard 2,4 mm (3/32 in.) shaft electrodes. See Quick Reference Index on page 68

Electrosurgical Pencil and Accessories



E2100 10 UNITS/CASE

Rocker Switch Pencil, Reusable

Accepts all standard 2,4 mm (3/32 in.) shaft electrodes

- Reusable stainless steel blade electrode
- Non-sterile
- 4,6 m (15 ft) silicone cord
- 50 uses
- Steam or EtO sterilizable
- 3 pin connector (Valleylab generators)



E2100E 10 UNITS/CASE

Rocker Switch Pencil, Reusable

Accepts all standard 2,4 mm (3/32 in.) shaft electrodes

- Reusable stainless steel blade electrode
- Non-sterile
- 4,6 m (15 ft) silicone cord
- 50 uses
- Steam or EtO sterilizable
- For Erbe ACC/ICC generator



E2400 50 UNITS/CASE

Electrosurgery Accessory Holster

- Sterile, single use



E2401 100 UNITS/CASE

LectroBasive™ Tip Cleaner

For use with stainless steel electrodes

- Sterile, single use
- 5,08 cm × 5,08 cm (2 in. × 2 in.)
- Adhesive backing
- X-ray detectable

Suction Coagulators, Sterile, Single Use



E2608-6 25 UNITS/CASE **8 Fr** ○

Hand Switching Suction Coagulator

- 8 Fr (2,7 mm; 0,105 in. diameter)
- 15,24 cm (6 in.) shaft length



E2505-10FR 25 UNITS/CASE **10 Fr** ○

Foot Switching Suction Coagulator

Requires E0502-1 monopolar adapter

- 10 Fr (3,3 mm; 0,131 in. diameter)
- 15,24 cm (6 in.) shaft length



E3305 25 UNITS/CASE **12 Fr** ○

Foot Switching Suction Coagulator

Requires E0502-1 monopolar adapter

- 12 Fr (4 mm inner diameter)
- 6 inch shaft length
- Extra insulation layers
- Hand and foot switching



E3310 25 UNITS/CASE **10 Fr** ○

Foot Switching Suction Coagulator

Requires E0502-1 monopolar adapter

- 10 Fr (3,3 mm inner diameter)
- 6 inch shaft length
- Extra insulation layers
- Hand and foot switching

Electrosurgical Electrodes, Sterile, Single Use

EDGE™ Coated Electrodes

Coated Electrode Technology...

Coated electrodes provide a wide range of benefits to the surgeon, including improved surgical performance and easier cleaning as compared to traditional stainless steel electrodes. There are several types of coated electrodes, all of which perform differently during surgical procedures.

EDGE™ coated electrodes are manufactured using high-quality surgical steel and a durable, proprietary, elastomeric polymer coating. EDGE™ electrodes provide a more consistent surgical effect with lower power settings.

Easy to Clean

Saves you time. With Valleylab's proprietary coating, no scraping is required. Just wipe clean with a wet sponge and continue.

Durable and Bendable

Without compromising the integrity of the coating. EDGE™ coated electrodes are bendable up to 45 degrees without the coating degradation or flaking that can occur with PTFE electrodes.

Improved Safety

With the NEW Safety Sleeve™ insulated electrodes. These electrodes provide an increased level of safety especially in procedures when the pencil tip can come in contact with unintended target tissue. There is no need to insulate these electrodes with rubber catheters or electrode tip protectors.

Choice of Styles

EDGE™ coated electrodes are available in a wide variety of styles, including blades, needles, three electrode lengths, and insulated electrodes for increased safety when used in close proximity to non-targeted tissue.

EDGE™ electrodes are available in your choice of rocker or button switch pencil for greater convenience and cost savings.

... To save surgeons and hospitals both time and money.



E1450G 50 UNITS/CASE

EDGE™ Coated Blade Electrode

- Total length: 7,62 cm (3 in.)
- Active length: 2,8 cm (1,1 in.)



E1450X 50 UNITS/CASE

EDGE™ Coated Blade Electrode

- Hex locking
- Total length: 6,35 cm (2,5 in.)
- Active length: 2,8 cm (1,1 in.)



E1450-4 50 UNITS/CASE

EDGE™ Coated Blade Extended Electrode

- Total length: 10,16 cm (4 in.)
- Active length: 2,54 cm (1 in.)



E1450-6 50 UNITS/CASE

EDGE™ Coated Blade Extended Electrode

- Total length: 16,51 cm (6,5 in.)
- Active length: 2,54 cm (1 in.)



E1475X 50 UNITS/CASE

EDGE™ Coated Blade Extended Electrode

For use when AccuVac™ smoke evacuation attachment is used

- Hex-locking
- Total length: 6,99 cm (2,75 in.)
- Active length: 2,8 cm (1,1 in.)

Standard 2,4 mm (3/32 in.) shaft is designed to fit most electrosurgical pencils

ELECTROSURGERY

Electrosurgical Electrodes, Sterile, Single Use

EDGE™ Coated Electrodes



E1452

50 UNITS/CASE

EDGE™ Coated Needle Electrode

- Total length: 7,2 cm (2,84 in.)
- Active length: 2,8 cm (1,1 in.)
- Tip radius: 0,864 mm (0,034 in.)



E1452-6

50 UNITS/CASE

EDGE™ Coated Needle Extended Electrode

- Total length: 16,51 cm (6,5 in.)
- Active length: 2,54 cm (1 in.)
- Tip radius: 0,864 mm (0,034 in.)



E1455

50 UNITS/CASE

EDGE™ Coated Blade Electrode

- Insulated
- Hex locking
- Total length: 6,99 cm (2,75 in.)
- Active length: 5,1 mm (0,2 in.)



E1455-4

50 UNITS/CASE

EDGE™ Coated Blade Extended Electrode

- Insulated
- Total length: 10,16 cm (4 in.)
- Active length: 5,1 mm (0,2 in.)

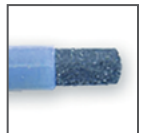


E1455-6

50 UNITS/CASE

EDGE™ Coated Blade Extended Electrode

- Insulated
- Total length: 16,51 cm (6,5 in.)
- Active length: 5,1 mm (0,2 in.)



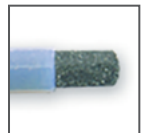
E1455B

25 UNITS/CASE

EDGE™ Coated Blade Electrode

Not compatible with foot switching pencils or AccuVac™ smoke evacuation attachment

- Insulated
- Safety Sleeve™
- Total length: 6,99 cm (2,75 in.)
- Active length: 5,1 mm (0,2 in.)



E1455B-4

25 UNITS/CASE

EDGE™ Coated Blade Extended Electrode

Not compatible with foot switching pencils or AccuVac™ smoke evacuation attachment

- Insulated
- Safety Sleeve™
- Total length: 10,16 cm (4 in.)
- Active length: 5,1 mm (0,2 in.)

Standard 2,4 mm (3/32 in.) shaft is designed to fit most electrosurgical pencils

Electrosurgical Electrodes, Sterile, Single Use
EDGE™ Coated Electrodes



E1465 50 UNITS/CASE

EDGE™ Coated Needle Electrode

- Insulated
- Total length: 7,2 cm (2,84 in.)
- Active length: 5,1 mm (0,2 in.)
- Tip radius: 0,787 mm (0,031 in.)



E1465-4 50 UNITS/CASE

EDGE™ Coated Needle Extended Electrode

- Insulated
- Total length: 10,16 cm (4 in.)
- Active length: 5,1 mm (0,2 in.)
- Tip radius: 0,787 mm (0,031 in.)



E1465-6 50 UNITS/CASE

EDGE™ Coated Needle Extended Electrode

- Insulated
- Total length: 16,51 cm (6,5 in.)
- Active length: 5,1 mm (0,2 in.)
- Tip radius: 0,787 mm (0,031 in.)



E1465B 25 UNITS/CASE

EDGE™ Coated Needle Electrode

Not compatible with foot switching pencils or AccuVac™ smoke evacuation attachment

- Insulated
- Safety Sleeve™
- Total length: 7,21 cm (2,84 in.)
- Active length: 5,1 mm (0,2 in.)
- Tip radius: 0,787 mm (0,031 in.)



E1465B-4 25 UNITS/CASE

EDGE™ Coated Needle Extended Electrode

Not compatible with foot switching pencils or AccuVac™ smoke evacuation attachment

- Insulated
- Safety Sleeve™
- Total length: 10,16 cm (4 in.)
- Active length: 5,1 mm (0,2 in.)
- Tip radius: 0,787 mm (0,031 in.)

Standard 2,4 mm (3/32 in.) shaft is designed to fit most electrosurgical pencils

Electrosurgical Electrodes, Sterile, Single Use

Tungsten Microsurgical Needle Electrodes



E1650 10 UNITS/CASE

Straight Microsurgical Needle

- Insulated
- Total length: 4,2 cm (1,65 in.)
- Exposed length: 2 cm (0,8 in.)
- Active length: 3,0 mm (0,120 in.)
- Tip radius: 0,06 mm (0,0023 in.)



E1651 10 UNITS/CASE

Straight Microsurgical Needle

- Insulated
- Total length: 5,4 cm (2,13 in.)
- Exposed length: 3 cm (1,2 in.)
- Active length: 3,0 mm (0,120 in.)
- Tip radius: 0,06 mm (0,0023 in.)



E1652 10 UNITS/CASE

Microsurgical Needle

- Insulated
- Total length: 5,4 cm (2,13 in.)
- Exposed length: 3 cm (1,2 in.)
- Active length: 3,0 mm (0,120 in.)
- Tip radius: 0,06 mm (0,0023 in.)
- 45 degree angle, 3,0 mm (0,120 in.) from tip



E1653 10 UNITS/CASE

Microsurgical Needle

- Insulated
- Total length: 5,4 cm (2,13 in.)
- Exposed length: 3 cm (1,2 in.)
- Active length: 3,0 mm (0,120 in.)
- Tip radius: 0,06 mm (0,0023 in.)
- 45 degree angle, 1 cm (0,4 in.) from tip



E1654B 10 UNITS/CASE

Microsurgical Needle With Safety Sleeve™

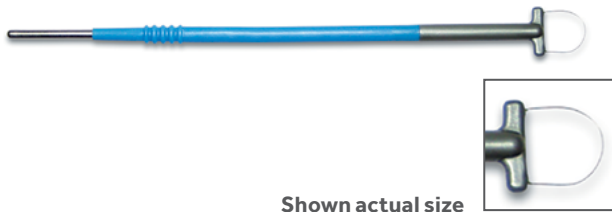
Not compatible with foot switching pencils or AccuVac™ smoke evacuation attachment

- Insulated
- Safety Sleeve™
- Total length: 10,16 cm (4 in.)
- Exposed length: 9 cm (3,5 in.)
- Active length: 3,0 mm (0,120 in.)
- Tip radius: 0,06 mm (0,0023 in.)

Standard 2,4 mm (3/32 in.) shaft is designed to fit most electrosurgical pencils

ELECTROSURGERY

Electrosurgical Electrodes, Sterile, Single Use LLETZ Electrodes



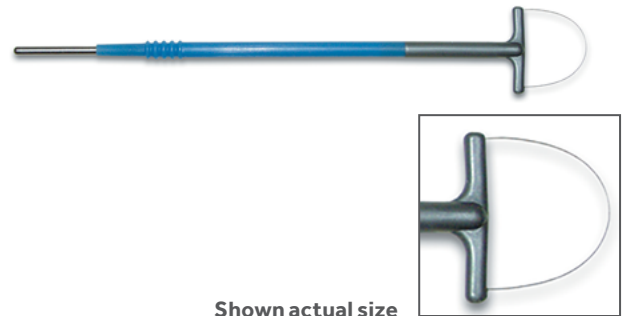
Shown actual size

E1559

10 UNITS/CASE

Tungsten Loop

- 10 mm × 10 mm
- 13 cm (5 in.) shaft length



Shown actual size

E1561

10 UNITS/CASE

Tungsten Loop

- 20 mm × 12 mm
- 13 cm (5 in.) shaft length



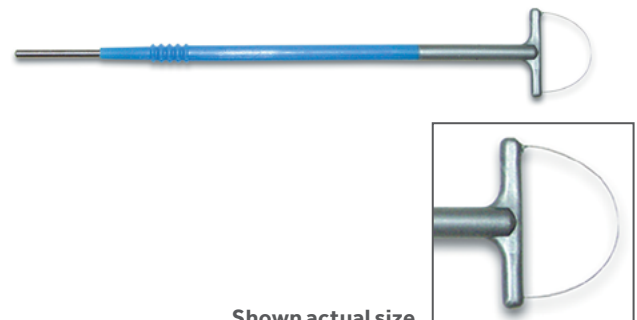
Shown actual size

E1560

10 UNITS/CASE

Tungsten Loop

- 10 mm × 20 mm
- 13 cm (5 in.) shaft length



Shown actual size

E1562

10 UNITS/CASE

Tungsten Loop

- 20 mm × 15 mm
- 13 cm (5 in.) shaft length

Standard 2,4 mm (3/32 in.) shaft is designed to fit most electrosurgical pencils

ELECTROSURGERY

Electrosurgical Electrodes, Sterile, Single Use LLETZ Electrodes



Shown actual size

E1563

10 UNITS/CASE

Stainless Steel Ball

- 3 mm diameter
- 13 cm (5 in.) shaft length



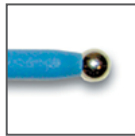
Shown actual size

E1565

10 UNITS/CASE

Tungsten Square Loop

- 5 mm × 5 mm
- 13 cm (5 in.) shaft length



Shown actual size

E1564

10 UNITS/CASE

Stainless Steel Ball

- 5 mm diameter
- 13 cm (5 in.) shaft length



Shown actual size

E1567

10 UNITS/CASE

Tungsten Square Loop

- 10 mm × 8 mm
- 13 cm (5 in.) shaft length

Standard 2,4 mm (3/32 in.) shaft is designed to fit most electrosurgical pencils

ELECTROSURGERY

Electrosurgical Electrodes, Sterile, Single Use Stainless Steel Electrodes



E1550 150 UNITS/CASE

Stainless Steel Ball Electrode

- Total length: 5,33 cm (2,1 in.)
- Active length: 1 cm (0,4 in.)
- Diameter: 5 mm (3/16 in.)



E1552 150 UNITS/CASE

Stainless Steel Needle Electrode

- Total length: 7,2 cm (2,84 in.)
- Active length: 2,8 cm (1,1 in.)
- Tip radius: 0,762 mm (0,030 in.)



E1551G 150 UNITS/CASE

Stainless Steel Blade Electrode

- Total length: 6,2 cm (2,44 in.)
- Active length: 2,8 cm (1,1 in.)



E1552-6 50 UNITS/CASE

Stainless Steel Extended Needle Electrode

- Total length: 16,51 cm (6,5 in.)
- Active length: 2,54 cm (1 in.)
- Tip radius: 0,762 mm (0,030 in.)



E1551X 150 UNITS/CASE

Stainless Steel Blade Electrode

- Hex locking
- Total length: 6,2 cm (2,44 in.)
- Active length: 2,54 cm (1 in.)



E2401 100 UNITS/CASE

LectroBasive™ Tip Cleaner

For use with stainless steel electrodes

- Sterile, single use
- 5,08 cm × 5,08 cm (2 in. × 2 in.)
- Adhesive backing
- X-ray detectable



E1551-6 50 UNITS/CASE

Stainless Steel Extended Blade Electrode

- Total length: 16,51 cm (6,5 in.)
- Active length: 2,54 cm (1 in.)

Standard 2,4 mm (3/32 in.) shaft is designed to fit most electrosurgical pencils

ELECTROSURGERY

CleanCoat™ Laparoscopic Electrodes, Sterile, Single Use

Solid Laparoscopic Electrodes



E3770-36C 10 UNITS/CASE

CleanCoat™ Laparoscopic Straight Spatula Electrode 36 cm, coated

- Fits 5 mm cannulas
- Total length: 36 cm (14 in.)



E3773-36C 10 UNITS/CASE

CleanCoat™ Laparoscopic Wire L-Hook Electrode 36 cm, coated

- Fits 5 mm cannulas
- Total length: 36 cm (14 in.)



E3771-36C 10 UNITS/CASE

CleanCoat™ Laparoscopic Curved Spatula Electrode 36 cm, coated

- Fits 5 mm cannulas
- Total length: 36 cm (14 in.)



E3773-45C 10 UNITS/CASE

CleanCoat™ Laparoscopic Wire L-Hook Electrode 45 cm, coated

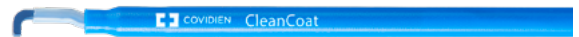
- Fits 5 mm cannulas
- Total length: 45 cm (17,7 in.)



E3771-45C 10 UNITS/CASE

CleanCoat™ Laparoscopic Curved Spatula Electrode 45 cm, coated

- Fits 5 mm cannulas
- Total length: 45 cm (17,7 in.)



E3774-36C 10 UNITS/CASE

CleanCoat™ Laparoscopic Flat L-Hook Electrode 36 cm, coated

- Fits 5 mm cannulas
- Total length: 36 cm (14 in.)



E3772-36C 10 UNITS/CASE

CleanCoat™ Laparoscopic Wire J-Hook Electrode 36 cm, coated

- Fits 5 mm cannulas
- Total length: 36 cm (14 in.)



E3774-45C 10 UNITS/CASE

CleanCoat™ Laparoscopic Flat L-Hook Electrode 45 cm, coated

- Fits 5 mm cannulas
- Total length: 45 cm (17,7 in.)

Standard 2,4 mm (3/32 in.) shaft is designed to fit most electrosurgical pencils, including E2515, E2516, FT3000, FT3000DB

ELECTROSURGERY

Electrosurgical Electrodes, Sterile, Single Use Arthroscopic Electrodes



E1510

10 UNITS/CASE

Arthroscopic Right-Angle Hook Electrode

Not compatible with foot switching pencils

- Insulated
- Stainless steel
- Total length: 21,6 cm (8,5 in.)
- Active length: 0,19 cm (0,075 in.)



E1512

10 UNITS/CASE

Arthroscopic Angled Blade Electrode

Not compatible with foot switching pencils

- Insulated
- Stainless steel
- Total length: 21,6 cm (8,5 in.)
- Active length: 0,19 cm (0,075 in.)



E1511

10 UNITS/CASE

Arthroscopic 45-Degree Angle Hook Electrode

Not compatible with foot switching pencils

- Insulated
- Stainless steel
- Total length: 21,6 cm (8,5 in.)
- Active length: 0,19 cm (0,075 in.)

Standard 2,4 mm (3/32 in.) shaft is designed to fit most electro-surgical pencils

Electrosurgical Electrodes, Non-Sterile, Reusable Stainless Steel Electrodes

Steam/EtO sterilizable



E1000

1 EACH

Stainless Steel Ball Electrode

- Total length: 5,33 cm (2,1 in.)
- Active length: 1 cm (0,4 in.)
- Diameter: 3,2 mm (1/8 in.)



E1005

1 EACH

Tungsten Wire Loop Electrode

- Total length: 5 cm (2 in.)
- Active length: 0,95 cm (0,38 in.)
- Diameter: 9,5 mm (3/8 in.)



E1002

1 EACH

Stainless Steel Ball Electrode

- Total length: 5,1 cm (2 in.)
- Active length: 5,6 mm (0,22 in.)
- Diameter: 5,6 mm (7/32 in.)



E1020

1 EACH

Stainless Steel Blade Electrode

- Hex locking
- Total length: 7 cm (2,75 in.)
- Active length: 2,8 cm (1,1 in.)



E1003

1 EACH

Stainless Steel Fine-Needle Electrode

- Total length: 6,6 cm (2,6 in.)
- Active length: 2,54 cm (1 in.)
- Tip radius: 0,51 mm (1/64 in.)



Only sold in selected countries

303-2

5 UNITS/CASE

Reger™ Needle Electrode; 20 × Ø 0,7 mm

- Connector pen: 2,4 mm
- Mechanical properties: to cut tissue
- Electrical properties: according to IEC 60601-1, IEC 60601-2-2
- Reprocessing: 300 times autoclavable at 134 °C; holding time 10 min
- Material: 1.4305, polyamide
- Color: black

Standard 2,4 mm (3/32 in.) shaft is designed to fit most electrosurgical pencils

**Electrosurgical Accessories, Non-Sterile, Reusable
Electrode Extensions**

Steam/EtO sterilizable.



Only sold in selected countries

361-0 5 UNITS/CASE

Tungsten Loop Electrode

- Loop diameter: 25 mm
- Shaft length: 110 mm



Only sold in selected countries

361-1 5 UNITS/CASE

Tungsten Loop Electrode

- Loop diameter: 30 mm
- Shaft length: 110 mm



E1502 1 EACH

Straight Electrode Extension

Compatible with standard 2,4 mm (3/32in.) shaft electrodes

- Total length: 13 cm (5,1 in.)
- Extension length: 10,2 cm (4 in.)



E1504 1 EACH

Straight Electrode Extension

Compatible with standard 2,4 mm (3/32in.) shaft electrodes

- Fits 5 mm cannulas
- Total length: 34,3 cm (13,5 in.)
- Extension length: 31,5 cm (12,4 in.)



Only sold in selected countries

301-5 5 UNITS/CASE

Reger™ Angled Blade Electrode

- 20 × 2,5 mm
- 45° angled connector: 2,4 mm
- Autoclavable at 134 °C
- Material: 1.4305, polyamide
- Color: black



Only sold in selected countries

374-3 1 EACH

Reger™ Electrode Adapter

- 2,4 mm to 4 mm
- Autoclavable at 134 °C
- Color: black



Only sold in selected countries

374-5 1 EACH

Reger™ Electrode Extension

For use with 2,4 mm electrodes and pencils

- Length: 90 mm
- Autoclavable at 134 °C
- Color: black



Only sold in selected countries

374-6 1 EACH

Reger™ Electrode Extension

For use with 2,4 mm electrodes and pencils

- Length: 140 mm
- Autoclavable at 134 °C
- Color: black

Standard 2,4 mm (3/32 in.) shaft is designed to fit most electrosurgical pencils

ELECTROSURGERY

Electrosurgical Accessories, Sterile, Single Use Tip Cleaner, Holster



E2401

100 UNITS/CASE

LectroBrasive™ Tip Cleaner

For use with stainless steel electrodes

- Sterile, single use
- 5,08 cm × 5,08 cm (2 in. × 2 in.)
- Adhesive backing
- X-ray detectable



E2400

50 UNITS/CASE

Electrosurgery Accessory Holster

- Sterile, single use

Patient Return Electrodes, Non-Sterile, Single Use Corded

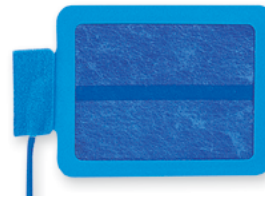


E7507 50 UNITS/CASE

Adult REM PolyHesive™ II Patient Return Electrode

For use with RECQM generators

- For patients > 30 lbs (> 13,6 kg)
- 2,7 m (9 ft) cord



E7510-25DB 25 UNITS/CASE

Infant REM PolyHesive™ II Patient Return Electrode

For use with RECQM generators

- For patients 6-30 lbs (2,72 – 13,6 kg)
- 4,6 m (15 ft) cord



E7507-DB 50 UNITS/CASE

Adult REM PolyHesive™ II Patient Return Electrode

For use with RECQM generators

- For patients > 30 lbs (> 13,6 kg)
- 4,6 m (15 ft) cord

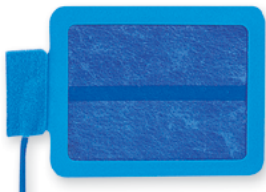


E7512 12 UNITS/CASE

Neonatal REM PolyHesive™ II Patient Return Electrode

For use with RECQM generators

- For patients 1 – 6 lbs (0,45 kg – 2,72 kg)
- 2,7 m (9 ft) cord



E7510-25 25 UNITS/CASE

Infant REM PolyHesive™ II Patient Return Electrode

For use with RECQM generators

- For patients 6 – 30 lbs (2,72 – 13,6 kg)
- 2,7 m (9 ft) cord

RECQM = Return Electrode Contact Quality Monitoring

Patient Return Electrodes, Non-Sterile, Single Use Non-Corded



E7509 50 UNITS/CASE, 5 per package
10 resealable packages per case

Adult REM PolyHesive™ II Patient Return Electrode

Requires E0560 reusable cord/clamp

For use with RECQM generators

- For patients > 30 lbs (> 13,6 kg)



HRA6 50 UNITS/CASE, 10 units per pouch

Valleylab™ Universal Patient Return Electrode

- Removable sticker for health record
- Waterproof and resistant to liquids
- No specific orientation needed
- ProRe™ Hydrogel



E7509-B 600 UNITS/CASE
50 per package, 12 resealable packages

Adult REM PolyHesive™ II Patient Return Electrode

Requires E0560 reusable cord/clamp

For use with RECQM generators

- For patients > 30 lbs (> 13,6 kg)

B = Bulk

Patient Return Electrode Cord



E0560

1 EACH

Patient Return Electrode Cord/Clamp, Reusable

Compatible with with RECQM generators

For use with E7508, E7509 and E7509-B patient return electrodes

- REM™ pin connector
- 4,6 m (15 ft) cord



E0560E

1 EACH

Patient Return Electrode Cord/Clamp

For use with E7509 and E7509-B patient return electrodes and ERBE generators

- 4,6 m (15 ft) cord

Foot Switching Bipolar Forceps, Non-Sterile, Reusable

Steam/EtO sterilizable

Only sold in selected countries



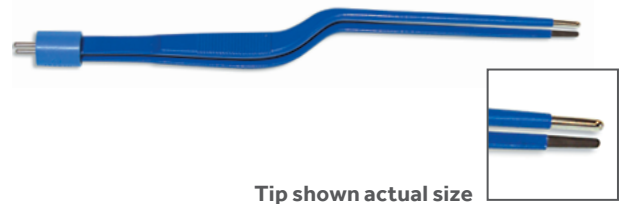
Tip shown actual size

E4051-CT

1 EACH

Scoville-Greenwood Bayonet Forceps†

- Insulated
- Smooth tips
- Total length: 19,7 cm (7,75 in.)
- Tip: 1,5 mm



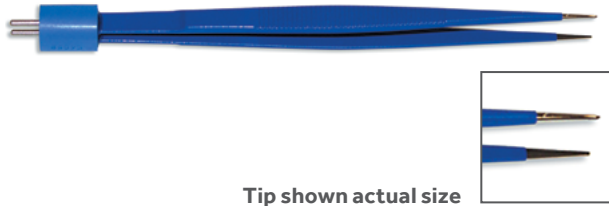
Tip shown actual size

E4054-CT

1 EACH

Cushing Bayonet Forceps†

- Insulated
- Smooth tips
- Total length: 19,1 cm (7,5 in.)
- Tip: 2,0 mm



Tip shown actual size

E4052-CT

1 EACH

Cushing Forceps†

- Insulated
- Smooth tips
- Total length: 15,2 cm (6 in.)
- Tip: 0,7 mm



Tip shown actual size

E4055-CT

1 EACH

Jewelers Forceps, Straight Tip†

- Insulated
- Smooth tips
- Total length: 10,2 cm (4 in.)
- Tip: 0,4 mm



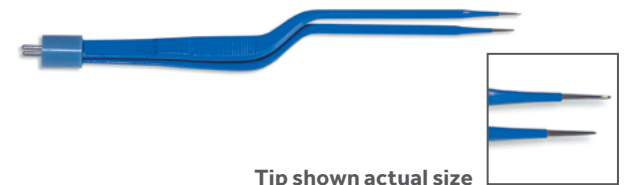
Tip shown actual size

E4053-CT

1 EACH

Cushing Forceps†

- Insulated
- Smooth tips
- Total length: 17,8 cm (7 in.)
- Tip: 1,5 mm



Tip shown actual size

E4057-CT

1 EACH

Gerald Bayonet Forceps†

- Insulated
- Smooth tips
- Total length: 19,1 cm (7,5 in.)
- Tip: 0,7 mm

† Requires E0512 single use cords or QI2401 or E0020V reusable cords

Foot Switching Bipolar Forceps, Non-Sterile, Reusable

Steam/EtO sterilizable

Only sold in selected countries



Tip shown actual size

E4058-CT

1 EACH

Cushing Bayonet Forceps

- Insulated
- Smooth tips
- Total length: 19,1 cm (7,5 in.)
- Tip: 0,7 mm



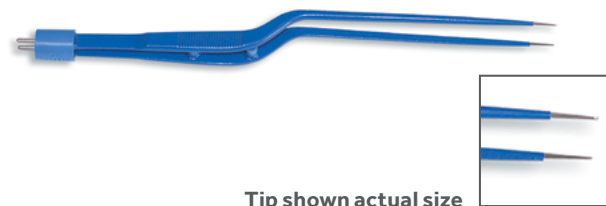
Tip shown actual size

E4062-CT

1 EACH

Curved Iris Forceps

- Insulated
- Smooth tips
- Total length: 8,9 cm (3,5 in.)
- Tip: 0,5 mm



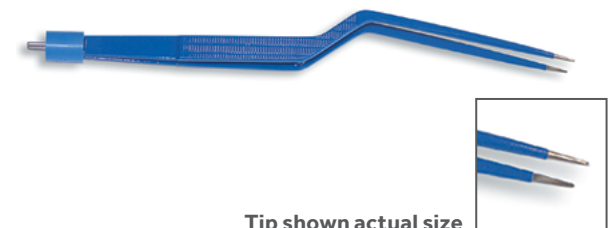
Tip shown actual size

E4059-CT

1 EACH

Hardy Bayonet Forceps with Stops*

- Insulated
- Smooth tips
- Total length: 20,9 cm (8,25 in.)
- Tip: 0,5 mm



Tip shown actual size

E4073-CT

1 EACH

Titanium Bayonet Forceps

- Insulated
- Smooth tips
- Total length: 22,2 cm (8,75 in.)
- Tip: 1,0 mm



Tip shown actual size

E4060-CT

1 EACH

Semkin Forceps with Stops*

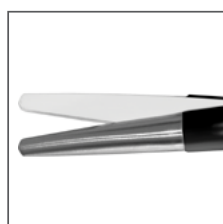
- Insulated
- Smooth tips
- Total length: 14 cm (5,5 in.)
- Tip: 0,5 mm

*Stops prevent scissoring of the tip

Bipolar Coagulation Scissors, Non-Sterile, Reusable

Medtronic bipolar coagulation scissors are available with three different jaw designs and can be used with common bipolar cables (European flat connector).

Only sold in selected countries



MEDTRONIC REUSABLE BIPOLAR COAGULATION SCISSORS 1 EACH

Standard Blade

- E97015BPS – 180 mm
- E97016BPS – 210 mm
- E97017BPS – 230 mm
- E97013BPS – 280 mm

- Can be used with standard bipolar forceps cords (e.g. E360131L, E360150L)
- Autoclavable at 134 °C
- Umax 300 Vp



MEDTRONIC REUSABLE BIPOLAR COAGULATION SCISSORS 1 EACH

Slim Blade

- E97011BPS – 180 mm
- E97018BPS – 210 mm
- E97012BPS – 230 mm
- E97014BPS – 280 mm

- Can be used with standard bipolar forceps cords (e.g. E360131L, E360150L)
- Autoclavable at 134 °C
- Umax 300 Vp



MEDTRONIC REUSABLE BIPOLAR COAGULATION SCISSORS 1 EACH

Micro Blade

- E97020BPS – 140 mm
- E97021BPS – 175 mm

- Can be used with standard bipolar forceps cords (e.g. E360131L, E360150L)
- Autoclavable at 134 °C
- Umax 300 Vp

**Electrosurgical Accessories, Sterile, Single Use
Cords**



FT0510 25 UNITS/CASE

Foot Switching Monopolar Cord Valleylab™ Mode

Connects any surgical instrument with a 4 mm connect or to the ForceTriad™ energy platform

- Delivers Valleylab™ mode
- Works with EndoShears, EndoDissectors, Roticulators, reusable lap handles
- 3 m (10 ft)



E0520 10 UNITS/CASE

Valleylab Trigger™ Switch and Cord

Converts most monopolar foot-activated laparoscopic and thorascopic instruments to hand activation

- Accepts 4 mm male post connector
- Trigger switch total length: 12,7 cm (5 in.)
- Monopolar connecting cord 3,0 m (10 ft)



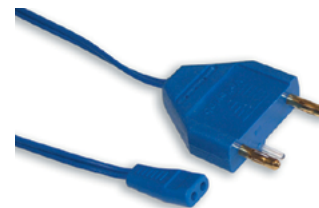
E0503 50 UNITS/CASE

Foot Switching Monopolar Cord

For use with ACMI Classic Series, pediatric, classic long resectoscopes and ACMI Bugbee electrodes

Requires E0502-1 monopolar adapter

- 3 m (10 ft)



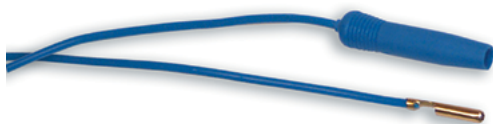
E0512 50 UNITS/CASE

Foot Switching Bipolar Forceps Cord

For use with Valleylab™ bipolar foot switching forceps

Compatible with Force™ series and SurgiStat™ II generators

- Moulded plug
- 3,6 m (12 ft)



E0510 50 UNITS/CASE

Foot Switching Monopolar Laparoscopic Cord

For use with most monopolar laparoscopic instruments

Requires E0502-1 monopolar adapter

- Accepts 4 mm male post connector
- 3 m (10 ft)

Electrosurgical Accessories, Non-Sterile, Reusable Bipolar Cords



92067

1 EACH

Reger™ Cable for Ethicon PowerStar Bipolar Scissors for International 2-pole Models, 5,0 m

- Generator side plug: international 2-pole model
- Instrument side plug: Ethicon PowerStar Bipolar Scissors
- Mechanical properties: to connect Ethicon PowerStar Bipolar Scissors with generators from international models
- Electrical properties: according to IEC 60601-1, IEC 60601-2-2
- Reprocessing: 300 times autoclavable at 134 °C; holding time 10 min
- Combination items: Ethicon PowerStar Bipolar Scissors
- Colour: grey
- Surface: matt

Electrosurgical Accessories, Non-Sterile, Reusable Bipolar Cords

Steam sterilizable



E0020V 1 EACH

Foot Switching Bipolar Cord

For use with the ForceTriad™ and Valleylab™ FX8 energy platforms

Also compatible with all Force™ series and SurgiStat™ II generators

For use with Valleylab™ bipolar foot switching forceps

- Moulded plug
- 4,5 m (15 ft)



E0021S 1 EACH

Foot Switching Bipolar Cord

For use with the ForceTriad™ and Valleylab™ FX8 energy platforms

Also compatible with all Force™ series and SurgiStat™ II generators

Compatible with most Storz bipolar instruments

- Moulded plug
- 4,5 m (15 ft)



E0022W 1 EACH

Foot Switching Bipolar Cord

For use with the ForceTriad™ and Valleylab™ FX8 energy platforms

Also compatible with all Force™ series and SurgiStat™ II generators

Compatible with most Wolf bipolar forceps

- Moulded plug
- 4,5 m (15 ft)

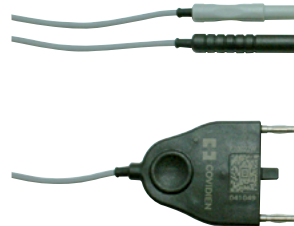
Bipolar resection cords



FT0021S 1 EACH

Storz™ Bipolar Resection Cord

- To be used with Storz™ bipolar Resectoscopes
- To be used with the ForceTriad™ energy platform
- Reusable
- 4,6 m cord

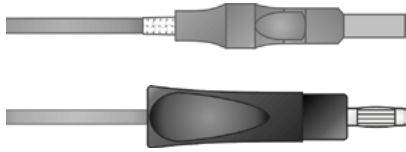


FT0022W 1 EACH

Wolf Bipolar Resection Cord

- To be used with Wolf bipolar resectoscopes
- To be used with the ForceTriad™ energy platform
- Reusable
- 4,6 m cord

Electrosurgical Accessories, Non-Sterile, Reusable, Monopolar Cords



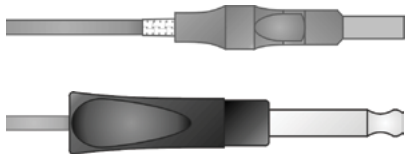
360186

1 EACH

Foot Switching Monopolar Cord

For use with Erbe ACC/ICC generators

- 4 mm female connector
- 3,5 m (11,5 ft)
- Use with Monopolar Forceps 700XXX



360187

1 EACH

Foot Switching Monopolar Cord

For use with Valleylab

- Jack 8 mm connector
- 3,5 m (11,5 ft)
- Use with Monopolar Forceps 700XXX

Electrosurgical Accessories, Non-Sterile, Reusable Adapters



E0017 1 EACH

Universal Monopolar Adapter

Compatible with Valleylab™ and most electrosurgical generators for foot switching activation

- Accepts standard monopolar accessory cords up to 6 mm



E0502-1 1 EACH

Monopolar Adapter

Compatible with Valleylab™ and most electrosurgical generators for foot switching activation

- Accepts standard monopolar accessory cord pin connectors up to 3,2 mm

E0005-3C 1 EACH

Monopolar Adapter

- Accepts 4 mm standard active accessory



368587 1 EACH

Monopolar Adapter

For use with Martin/ Berchtold generators

- Accepts Valleylab™ 3 pin electrosurgical pencils



368687 1 EACH

Monopolar Adapter

For use with Erbe ACC/ICC generators

- Accepts Valleylab™ 3 pin electrosurgical pencils



E0507-B 1 EACH

Multiple Return/S Cord Adapter

For use with all Valleylab™ REM-equipped generators

- Accepts Valleylab™ REM PolyHesive™ II patient return electrodes
- Enables use of two patient return electrodes
- Enables use of an S cord

Electrosurgical Accessories

E0504-2 Non-REM™ Patient Return Electrode Adapter Quick Reference Index

For use with the following generators:

Birtcher/Bard System 2000BP
 Birtcher/Bard System 2000BP-11
 Birtcher/Bard System 3000
 Birtcher/Bard System 5000
 Burdick SU-7
 Burdick SU-8
 Cameron-Miller 26-1290
 Cameron-Miller 26-2500
 Cameron-Miller 80-1983
 Circon/ACMI Wrappler BC-200
 Circon/ACMI Wrappler C-650
 Circon/ACMI Wrappler C-650-FO
 Concept 9600
 Concept 9900
 ConMed/Aspen Labs 100
 ConMed/Aspen Labs 180
 ConMed/Aspen Labs 360
 ConMed/Aspen Labs 360 A
 ConMed/Aspen Labs MF380
 ConMed/Aspen Labs MF450
 EMS/Davol/NDM Blendtomes
 EMS/Davol/NDM Hyfrecators
 EMS/Davol/NDM 701-706
 EMS/Davol/NDM 737
 EMS/Davol/NDM 737XL
 EMS/Davol/NDM 771
 EMS/Davol/NDM 772
 EMS/Davol/NDM 773
 Maxxim CSV Bovie
 Maxxim URO Bovie
 Maxxim/Bovie X-10
 Maxxim Solid State 400
 Maxxim Solid State 400 B
 Maxxim Solid State 400SR
 Microvasive Endostat, Endostat II
 Neomed/Richards 3000 Series
 Utah Medical Finesse

**92394**

1 EACH

Bipol. Adapter International / ERBE™ Cable

- Generator side: international version 2 pol.
- Accessory side: bipolar cable with ERBE™ plug
- Electrical properties: according to IEC 60601-1, IEC 60601-2-2
- Autoclavable at 134 °C

Electrosurgical Accessories

Monopolar Cord Quick Reference Index

Product Number	Product	Length	Single Use/Reusable	Order Quantity	Comments
E0510	Foot Switching Laparoscopic Instrument Cord	3 m (10 ft)	Single Use	50 units/case	Accepts standard 4 mm male post connector Requires E0502-1 monopolar adapter
E0503	Foot Switching Bugbee Electrode Cord	3 m (10 ft)	Single Use	50 units/case	Requires E0502-1 monopolar adapter
360186	Foot Switching	3,5 m (11,5 ft)	Reusable	1 each	Accepts 4 mm male connector generators
360187	Foot Switching	3,5 m (11,5 ft)	Reusable	1 each	Accepts 4 mm male connector generators

Bipolar Cord Quick Reference Index

Product Number	Product	Length	Single Use/Reusable	Order Quantity	Comments
E0512	Foot Switching Forceps Cord	3,6 m (12 ft)	Single Use	50 units/case	Three-pin moulded plug is compatible with Force™ series and SurgiStat™ II generators
E0020V	Foot Switching Bipolar Cord	4,6 m (15 ft)	Reusable – Steam	1 each	Moulded plug Accepts Valleylab™ bipolar foot switching forceps
E0021S	Foot Switching Bipolar Cord	4,6 m (15 ft)	Reusable – Steam	1 each	Moulded plug Accepts most Storz bipolar instruments
E022W	Foot Switching Bipolar Cord	4,6 m (15 ft)	Reusable – Steam	1 each	Moulded plug Accepts most Wolf bipolar forceps
E360131L	Foot Switching Forceps Cord	4,6 m (15 ft)	Reusable – Steam/EtO	1 each	For use with ErbeStorz Wolf generators
E360139L E360150L	Foot Switching Forceps Cord	4,6 m (15 ft)	Reusable – Steam/EtO	1 each	For use with Valleylab generators
E360139L	Foot Switching Forceps Cord	4,6 m (15 ft)	Reusable – Steam/EtO	1 each	For use with Martin/Berchtold generators
E360135	Foot Switching Forceps Cord	4,6 m (15 ft)	Reusable – Steam/EtO	1 each	Standard twin pin plug
FT0021S	Foot Switching Cord	4,6 m (15 ft)	Reusable – Steam/EtO	1 each	For use with ForceTriad™ energy platform
FT0022W	Foot Switching Cord	4,6 m (15 ft)	Reusable – Steam/EtO	1 each	For use with ForceTriad™ energy platform

Laparoscopic Instruments, Sterile, Single Use Opti4™ Handset and Retractable Hollow Laparoscopic Electrodes



E2750 10 UNITS/CASE

Opti4™ Laparoscopic Handset

Requires Opti4™ retractable and non-retractable electrodes

- Laparoscopic suction/irrigation device with cut and coag
- Pencil-grip
- 3 m (10 ft) cord



E2783R-36ASP 10 UNITS/CASE

Wire L-Hook Tip

Requires E2750 Opti4™ handset

- Fits 5 mm cannulas
- Aspiration holes
- Insulated tip
- Total length: 36 cm (14 in.)



E2781R-28ASP 10 UNITS/CASE

Curved Spatula Tip

Requires E2750 Opti4™ handset

- Fits 5 mm cannulas
- Aspiration holes
- Total length: 28 cm (11 in.)



E2784R-28ASP 10 UNITS/CASE

Flat L-Hook Tip

Requires E2750 Opti4™ handset

- Fits 5 mm cannulas
- Aspiration holes
- Insulated tip
- Total length: 28 cm (11 in.)



E2782R-28ASP 10 UNITS/CASE

Wire J-Hook Tip

Requires E2750 Opti4™ handset

- Fits 5 mm cannulas
- Aspiration holes
- Insulated tip
- Total length: 28 cm (11 in.)

Laparoscopic Instruments, Sterile, Single Use

Opti4™ Non-Retractable Hollow Laparoscopic Electrodes



E2780-28

10 UNITS/CASE

Straight Spatula Tip

Requires E2750 Opti4™ handset

- Fits 5 mm cannulas
- Total length: 28 cm (11 in.)



E2783-28

10 UNITS/CASE

Wire L-Hook Tip

Requires E2750 Opti4™ handset

- Fits 5 mm cannulas
- Total length: 28 cm (11 in.)



E2781-28

10 UNITS/CASE

Curved Spatula Tip

Requires E2750 Opti4™ handset

- Fits 5 mm cannulas
- Total length: 28 cm (11 in.)



E2784-28

10 UNITS/CASE

Flat L-Hook Tip

Requires E2750 Opti4™ handset

- Fits 5 mm cannulas
- Total length: 28 cm (11 in.)



E2782-28

10 UNITS/CASE

Wire J-Hook Tip

Requires E2750 Opti4™ handset

- Fits 5 mm cannulas
- Total length: 28 cm (11 in.)



E2786-28

10 UNITS/CASE

Cylindrical Tip

Requires E2750 Opti4™ handset

- Fits 5 mm cannulas
- Total length: 28 cm (11 in.)

Argon-Enhanced Electrosurgery

Argon 4 Plasma coagulator System and Accessories



07179

1 EACH

Argon™ 4 Plasma generator

The Argon™ 4 plasma generator is designed to work in conjunction with Valleylab electrosurgical units

- Interactive LCD screen
- Individual gas flow settings for CUT & COAG
- Gas level meter on display
- Supports 2 individual Argon tanks
- Dimensions 410 × 300 × 145mm
- Weight: 5,35kg



10760

1 EACH

Argon™ Adapter Valleylab™ E2520H Handpiece

Compatible with Valleylab E2520H handpiece

- For use with Argon™ 4 Generator



UC8015

1 EACH

Universal Mounting Cart Argon Gas Tank Kit

- Holds 2 G-size 42 cubic ft tanks



UC8009

1 EACH

Universal Mounting Cart

- Rust resistant
- Conductive casters (2 locking, 2 non-locking)



UC8010

1 EACH

Universal Mounting Cart Overshelf

Ideal for a second electrosurgical generator, LigaSure™ vessel sealing system, RapidVac™ smoke evacuation system or Force Argon II™ system

- Supports 75 lbs centered on shelf

Argon-Enhanced Electrosurgery

Argon 4 Plasma coagulator Accessories



10763 1 EACH

Argon™ Connection Hose

Connection Hose length 280 mm

10764 1 EACH

Argon™ Connection Hose

Connection Hose length 750 mm

10765 1 EACH

Argon™ Connection Hose

Connection Hose length 1500 mm



10761 1 EACH

Argon™ cable ESU

Designed to be used with Valleylab Electrosurgical Generator

- 170 mm

10762 1 EACH

Argon™ cable ESU

Designed to be used with Valleylab™ Electrosurgical Generator

- 450 mm



10767 1 EACH

Argon™ Cylinder connection

Standard ISO 5145 N4;
cylinder thread W24 × 2 mm RH Male



10769 1 EACH

Argon™ Cylinder connection

Standard DIN 477-1 N6;
cylinder thread W 21,8 – 14 TPI RH Male



10770 1 EACH

Argon™ Cylinder connection

Standard BS341-3 N3;
cylinder thread G 5/8" – 14 NGO RH Female



10771 1 EACH

Argon™ Cylinder connection

Standard UNI11144 N8;
cylinder thread W24,51 × 1,814 RH Female



10773 1 EACH

Argon™ Cylinder connection

Standard NEN 3268 RU 3;
cylinder thread W24,32 × 1/14" RH Male

ELECTROSURGERY

Argon-Enhanced Electrosurgery, Sterile, Single Use Argon Plus™ Handset



E2520H

10 UNITS/CASE

ArgonPlus™ Handset

Requires Argon Plus™ electrodes

Requires E0502-1 monopolar adapter

- For delivery of standard or argon-enhanced electrosurgery
- 2,5 cm (1 in.) retractable blade electrode
- 3,6 m (10 ft.) cord
- Holster
- Electrode retraction control

Argon-Enhanced Electrosurgery, Sterile, Single Use Argon Plus™ Electrodes



E2530-3 10 UNITS/CASE

Flexible Electrode

Requires E2520H Argon Plus™ handset

- Argon coagulation only
- 7,6 cm (3 in.) length



E2580-28 10 UNITS/CASE

Laparoscopic Blade Electrode

Requires E2520H Argon Plus™ handset

- Fits 5 mm cannulas
- 28 cm (11 in.) length
- Retractable electrode



E2530-6 10 UNITS/CASE

Flexible Electrode

Requires E2520H Argon Plus™ handset

- Argon coagulation only
- 15 cm (6 in.) length



E2581-28 10 UNITS/CASE

Laparoscopic Modified Flat-L Electrode

Requires E2520H Argon Plus™ handset

- Fits 5 mm cannulas
- 28 cm (11 in.) length
- Retractable electrode



E2530-28 10 UNITS/CASE

Laparoscopic Flexible Electrode

Requires E2520H Argon Plus™ handset

- Fits 5 mm cannulas
- Argon coagulation only
- 28 cm (11 in.) length



E2583-28 10 UNITS/CASE

Laparoscopic Tungsten Blunt Needle Electrode

Requires E2520H Argon Plus™ handset

- Fits 5 mm cannulas
- 28 cm (11 in.) length
- Retractable electrode



E2532 50 UNITS/CASE

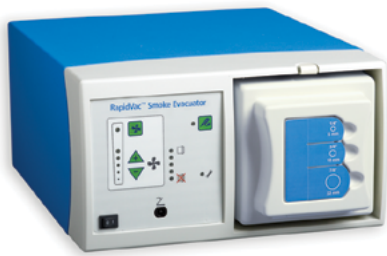
Tungsten Sharp Needle Electrode

Requires E2520H Argon Plus™ handset

- 2,5 cm (1 in) length

Smoke Evacuation Products

RapidVac™ Smoke Evacuation System and Accessories



SE3695 1 EACH

RapidVac™ Smoke Evacuator

Requires SEA3700 RapidVac™ smoke evacuator filter

For use with any electrosurgical generator

- Evacuates electrosurgical smoke and laser plume
- Synchronizes with electrosurgical units for auto activation using SEA3730
- Five power levels plus turbo mode
- Maximum flow rate of 44 cfm
- Needs no prefilters or adapters



SEA3730 1 EACH

RapidVac™ Interlink Cable

Synchronizes RapidVac™ system to FT10, FX8 and Force Triad

- 3 m (10 ft) cable



SEA3700 2 UNITS/CASE

RapidVac™ Smoke Evacuator Filter

- Four-stage, ULPA filter technology
- Three convenient ports, no adapters needed
 Port size: 6 mm (1/4 in.)
 10 mm (3/8 in.)
 22 mm (7/8 in.)
- No prefilter needed
- 25 hours of activation time; approximately three to five months actual use



SEA3741 1 EACH

RapidVac™ Remote Switch Activator

Synchronizes RapidVac™ System to any ES generator by sensing the RF Energy through the ES Pencil cable

- Adjustable delay of STOP function (0 to 10 sec)



SEA3745 1 EACH

RapidVac™ Smoke Evacuator Foot Switch

For use with RapidVac™ smoke evacuator

- 4,6 m (15 ft) cord

Smoke Evacuation Products, Sterile, Single Use RapidVac™ Tubing



SEA3705 10 UNITS/CASE

Tubing, 1/4" × 10'

- Connects directly to RapidVac™ smoke evacuator
- Lap tubing/no valve



SEA3720 12 UNITS/CASE

Laparoscopic Tubing, 1/4" × 10'

- Connects directly to RapidVac™ smoke evacuator
- In-line valve enables controlled smoke evacuation with minimal pneumoperitoneal pressure loss



SEA3710 10 UNITS/CASE

Tubing, 3/8" × 10'

- Connects directly to RapidVac™ smoke evacuator
- Interfaces with AccuVac™ pencil



SEA3725 10 UNITS/CASE

Wand

Compatible with E3635 and SEA3715 7/8" tubing

- For evacuation of laser plume; laser resistant
- 2,2 cm (7/8 in.) diameter
- 20 cm (8 in.) length



SEA3715 10 UNITS/CASE

Tubing with Sponge Guard, 7/8" × 10'

- Connects directly to RapidVac™ smoke evacuator



E3595 10 UNITS/CASE

AccuVac™ Smoke Evacuation Attachment Extender

For use with 15,24 cm (6 in.) extended electrodes

Smoke Evacuation Products, Sterile, Single Use

Smoke Evacuation Pencils and Attachments



E2350HS 25 UNITS/CASE

Rocker Switch Pencil

- EDGE™ coated hex-locking blade electrode
- AccuVac™ smoke evacuation attachment (requires a smoke evacuator)
- Holster
- 3/8" × 1' tubing with 3/8" tubing connector
- 3 m (10 ft) cord



E2516HS 25 UNITS/CASE

Button Switch Pencil

- Stainless steel hex-locking blade electrode
- AccuVac™ smoke evacuation attachment (requires a smoke evacuator)
- Holster
- 3/8" × 1' tubing with 3/8" tubing connector
- 3 m (10 ft) cord



E2450HS 25 UNITS/CASE

Button Switch Pencil

- EDGE™ coated hex-locking blade electrode
- AccuVac™ smoke evacuation attachment (requires a smoke evacuator)
- Holster
- 3/8" × 1' tubing with 3/8" tubing connector
- 3 m (10 ft) cord



E3810 20 UNITS/CASE

Valleylab™ Smoke Attachment

- 3/8" (1 cm) tubing, 10' (3 m)



E2515HS 25 UNITS/CASE

Rocker Switch Pencil

- Stainless steel hex-locking blade electrode
- AccuVac™ smoke evacuation attachment (requires a smoke evacuator)
- Holster
- 3/8" × 1' tubing with 3/8" tubing connector
- 3 m (10 ft) cord



E3815 20 UNITS/CASE

Valleylab™ Smoke Attachment

- 3/8" (1 cm) tubing, 15' (4,6 m)

See Quick Reference Index page 69

ELECTROSURGERY

Smoke Evacuation Products, Sterile, Single Use Smoke Evacuation Pencils and Attachments



SEP5000 20 UNITS/CASE

**Valleylab™ Smoke Evacuation Rocker Switch
Pencil, Edge™ Blade Electrode 10' (3 m)**

SEP5015 20 UNITS/CASE

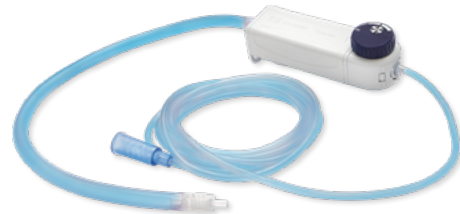
**Valleylab™ Smoke Evacuation Rocker Switch
Pencil, Edge™ Blade Electrode 15' (4,6 m)**

SEP6000 20 UNITS/CASE

**Valleylab™ Telescoping Smoke Evacuation
Rocker Switch Pencil, Edge™ Blade Electrode 10'
(3 m)**

SEP6015 20 UNITS/CASE

**Valleylab™ Telescoping Smoke Evacuation
Rocker Switch Pencil, Edge™ Blade Electrode 15'
(4,6 m)**



SEL7000A 10 UNITS/CASE

**Valleylab™ Laparoscopic
Smoke Evacuation System**

Smoke Evacuation Products

OptiMumm™ Smoke Evacuation Accessories



E3635

12 UNITS/CASE

Tubing 7/8" × 10' with Sponge Guard and Prefilter Adapter

For use with the OptiMumm™ smoke evacuator

- Sterile, single use
- 3,4 cm (1 1/3 in.) connector



E3645

10 UNITS/CASE

AccuVac™ Smoke Evacuation Attachment Tubing

For use with E3590

- Sterile, single use
- 1 cm (3/8 in.) diameter
- 3 m (10 ft) length
- 3,4 cm (1 1/3 in.) diameter prefilter adapter

See Quick Reference Index page 69

Smoke Evacuation Products
Smoke Evacuation Accessories



RVFT10

10 UNITS/CASE

RapidVac™ Fluid Trap

- No spill design – internal tortuous path prevents contents from leaking
- Capped connection ports with cap holders built into fluid trap
- 100 cc capacity with marked 25 cc graduations
- Clear construction allows for inspection of contents



UC8010

1 EACH

Universal Mounting Cart Overshelf

For use with UC8009 universal mounting cart only

Ideal for RapidVac™ or OptiMumm™ smoke evacuation systems

- Supports 75 lbs centered on shelf
- Supplied with cord management kit

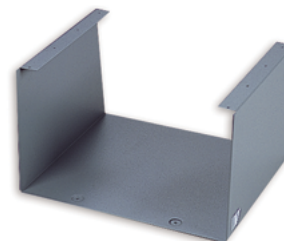


UC8009

1 EACH

Universal Mounting Cart

- Rust resistant
- Conductive casters (2 locking, 2 non-locking)
- Supplied with cord management kit



UC8013

1 EACH

Universal Mounting Cart Suspended Shelf

For use with UC8009 universal mounting cart only

Not compatible with UC8012 drawer

Ideal for the RapidVac™ or OptiMumm™ smoke evacuation systems

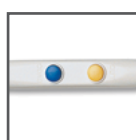
- Supports 75 lbs

ELECTROSURGICAL PENCIL QUICK REFERENCE INDEX

Usage	Activation	Model	Electrode connection	Electrode technology	Electrode shape	Cord length	Specialty	Code	Packaging pcs/box	
Single use	Hand switching	Rocker	Hex-locking	EDGE™ Coated Electrode	Blade	3 m	With holster	E2350H	50	
							Smoke evacuation - holster	E2350HS	25	
						4,6 m	With holster	E2350H-DB	50	
				Stainless Steel	Blade	3 m		E2515	50	
							With holster	E2515H	50	
						4,6 m	With holster	E2515HS	25	
		Cylindrical	Stainless Steel	Needle	3 m	With holster	E2515H-DA	50		
					90° Angle	3 m	With holster	E2510H	10	
				Blade	3 m	With holster	E2450H	50		
			3 m		Smoke evacuation - holster	E2450HS	50			
			Stainless Steel		Blade	3 m		E2516	50	
				3 m		With holster	E2516H	50		
	3 m	Smoke evacuation - holster		E2516HS		25				
	Button	Hex-locking	EDGE™ Coated Electrode	Blade	3 m	With holster	E2450H	50		
						Smoke evacuation - holster	E2450HS	50		
						3 m		E2516	50	
					Stainless Steel	Blade	3 m	With holster	E2516H	50
							3 m	Smoke evacuation - holster	E2516HS	25
							3 m		E2516H-DA	50
		Cylindrical	Stainless Steel	Needle	3 m	Smoke evacuation - holster	E2516H-DA	50		
					Blade	3 m		VL2610	50	
						4,5 m	for ERBE ESU	VL2610E	50	
				4,5 m			VL2610DB	50		
				Coated Stainless Steel	Blade	3 m		VL2615	50	
4,5 m							VL2615E	50		
4,5 m		VL2615DB	50							
Button	Hex-locking	EDGE™ Coated Electrode	Blade	3 m	ValleyLab™ Mode	FT3000	25			
				4,6 m	ValleyLab™ Mode	FT3000DB	25			
Foot switching	Hex-locking	EDGE™ Coated Electrode	Blade	3 m	With holster	E2250H	50			
				Stainless Steel	Blade	3 m		E2504	50	
						With holster	E2504H	50		
Reusable	Hand switching	Rocker	Hex-locking	Stainless Steel	Blade	4,6 m		E2100	10	
							for ERBE ESU	E2100E	10	



Rocker



Button



Cylindrical



Hex-locking



Holster

SMOKE EVACUATION PENCIL QUICK REFERENCE INDEX

		E2350HS	E2450HS	E2515HS	E2516HS	E3590	E3595	SE3695	SEA3700	SEA3730	SEA3745	SEA3705	SEA3710	SEA3715	SEA3720	SEA3725	INS-500/515	INS-600/615	INS-400-150/EU	INS-410-150/EU	RVFT10
E2350HS	Disposable HS Smoke Evac Pencil						X		X			X			X						
E2450HS	Disposable HS Smoke Evac Pencil						X		X			X			X						
E2515HS	Disposable HS Smoke Evac Pencil						X		X			X			X						
E2516HS	Disposable HS Smoke Evac Pencil						X		X			X			X						
E3590	Smoke Evacuation Attachment	Fits on every Valleylab™ hand switching pencil																			
E3595	Accuvac Smoke Evac Extension	X	X	X	X																
SE3695	RapidVac™ Smoke Evacuator								X	X	X										
SEA3700	Filter for RapidVac™ Smoke Evacuator SE3695 X	X	X	X	X			X				X	X	X	X				X	X	
SEA3730	RapidVac™ Interlink Cable							X													
SEA3745	RapidVac™ Footswitch							X													
SEA3705	Tubing	X	X	X	X	X			X												
SEA3710	Tubing	X	X	X	X				X												
SEA3715	Tubing	X	X	X	X				X							X					
SEA3720	Laparoscopic Tubing	X	X	X	X	X			X												
SEA3725	Filter Saver with 2 Inlets of 10 mm	X	X	X	X	X			X												



CAMERAS

95-3901 1 EACH

Native full HD camera head

1 chip CMOS with parfocal zoom, $f = 14.25\text{--}28\text{ mm}$, hydrogen peroxide gas plasma sterilization compatible.

95-3930 1 EACH

Native full HD camera control unit

With selective color enhancement, smoke reduction, and image capture.

ACCESSORIES

PS00510 1 EACH

USB keyboard German layout

PS00511 1 EACH

USB keyboard English layout

6226-ACAABZZZ-002 1 EACH

Footswitch

LAPAROSCOPES

11.0055A 1 EACH

5.0 mm HD laparoscope, 312 mm, 0° Wide angle

11.0057A 1 EACH

5.0 mm HD laparoscope, 312 mm, 30° Wide angle

11.0031A 1 EACH

10.0 mm HD laparoscope, 344 mm, 0° Wide angle

11.0043A 1 EACH

10.0 mm HD laparoscope, 344 mm, 30° Wide angle

11.0041A 1 EACH

10.0 mm HD laparoscope, 344 mm, 45° Wide angle

LIGHT SOURCES AND LIGHT GUIDES

05.0740LED 1 EACH

LED light source

05.0090L 1 EACH

4.8 × 2300 mm, light guide for LED light source

05.0087L 1 EACH

4.8 × 3000 mm, light guide for LED light source

05.0088I.ht 1 EACH

3.5 × 2300 mm, light guide recommended for Xenon™* light sources > 300

05.0090I.ht 1 EACH

4.8 × 2300 mm, light guide recommended for Xenon™* light sources

05.0085L.ht 1 EACH

3.5 × 3000 mm, light guide recommended for Xenon™* light sources

INSUFFLATOR

FM134 1 EACH

Multi-mode insufflator (maximum 50 L/min)

Z0293 1 BOX = 10 PCS.

Disposable insufflation tubing with integrated filter

Z0280† 1 EACH

Reusable gas heating insufflation tubing, 100 uses

Z0260 1 BOX = 10 PCS.

Disposable gas heating insufflation tubing with integrated filter

Z5044-01 1 EACH

Hose for CO₂ gas bottle DIN:US, 1.5 m

Z5045-01 1 EACH

Hose for CO₂ gas bottle ISO:US, 1.5 m

Z0499-01 1 EACH

Hose for CO₂ gas bottle PIN:US, 1.5 m

Z5100-01 1 EACH

Hose for CO₂ central gas US:DIN, 3 m

Z5101-01 1 EACH

Hose for CO₂ central gas US:DIN, 5 m

Z5102-01 1 EACH

Hose for CO₂ central gas US:NF, 3 m

Z5103-01 1 EACH

Hose for CO₂ central gas US:NF, 5 m

Z5104-01 1 EACH

Hose for CO₂ central gas US:UNI, 3 m

Z5105-01

Hose for CO₂ central gas US:UNI, 5 m

Z5106-01 1 EACH

Hose for CO₂ central gas US:AGA, 3 m

Z5107-01 1 EACH

Hose for CO₂ central gas US:AGA, 5 m

Z5108-01 1 EACH

Hose for CO₂ central gas DISS:DISS, 3.0 m

Z5074-01 1 EACH

NIST adapter for universal gas connection

Z5075-01 1 EACH

DISS adapter for universal gas connection

Z5072-01 1 EACH

Sinter filter for universal gas connection

Z5048-01 1 EACH

Hose for CO₂ central gas DISS:DISS, 1 m

5073-01 1 EACH

US adapter for universal gas connection

Z5077-01 1 EACH

CO₂ gas connector, angled*† Not available for sale in the United States.***LAPAROSCOPIC SUCTION
IRRIGATION PUMP†**

PP120 1 EACH

Laparoscopic suction irrigation pump with RFID

T0502-01 1 BOX = 10 PCS.

Tube set outflow, disposable

T0504-01 1 BOX = 10 PCS.

Tube set, vacuum, disposable

T0505-01 1 BOX = 10 PCS.

Tube set for irrigation, disposable

T0506-01 1 EACH

Tube set for irrigation, reusable, 20 uses

*† Not available for sale in the United States and Canada.***MONITORS**

MLW-2623C-DC 1 EACH

Full HD 26-inch monitor

MLW-3225C FULL 1 EACH

HD 32-inch monitor

TOWERS

KU-5483-902 1 EACH

Monitor cart

KU-5167-902 1 EACH

Cart for two monitors

KU-7211-902 1 EACH

Cart for 32-inch monitors (up to 19 kg)



ENDOSCOPES

- | | |
|-----------------------------------------------------------|---------------|
| 153-0052 | 1 EACH |
| VS3 iridium endoscope 5 mm long, 30° standard FOV† | |
- | | |
|----------------------------------------------------------|---------------|
| 153-0053 | 1 EACH |
| VS3 iridium endoscope 5 mm long, 0° standard FOV† | |
- | | |
|------------------------------------------------------------|---------------|
| 153-0072 | 1 EACH |
| VS3 iridium endoscope 10 mm long, 30° standard FOV† | |
- | | |
|-----------------------------------------------------------|---------------|
| 153-0073 | 1 EACH |
| VS3 iridium endoscope 10 mm long, 0° standard FOV† | |

† Field of view. 12 EleVision™ HD 1 System

MICROSCOPE

- | | |
|---------------------------------------------------|---------------|
| 174-0012 | 1 EACH |
| Fluorescence miniature microscope (MMS-IR) | |

CAMERA

- | | |
|-------------------------------------------------------------------------|---------------|
| 174-0051 | 1 EACH |
| VS3 iridium fluorescence camera (Camera-IR) CAMERA CONTROL UNIT† | |
- | | |
|----------------------------------------------------------------------|---------------|
| 443-0001 | 1 EACH |
| VS3 iridium camera control unit with iridium software license | |

† Only available as spare part for the VS3 Iridium system.

LIGHT SOURCES AND LIGHT CABLES†

460-0011 1 EACH

VS3 iridium laser light source

560-6453 1 EACH

VS3 Xenon™ light source

161-0001 1 EACH

VS3 iridium light beam combiner

560-6462 1 EACH

VS3 light cable*† Only available as spare part for the VS3 Iridium system.*

MONITOR

550-5065 1 EACH

27-inch 2DHD touch monitor*† Only available as spare part for the VS3 Iridium system.*

DRAPES

115-0012 10 EACH

Iridium MMS drapes†*† Distributed by third party vendor.**‡ Only available for sale in the United States.*

ACCESSORIES†

519-1341 1 EACH

VS3 rolling cart 230V

115-0051 1 EACH

VS3 iridium camera holding arm

519-1709 1 EACH

Twin gas bottle holder

560-6478 1 EACH

Replacement Xenon™ bulb*† Only available as spare part for the VS3 Iridium system.*

Catalogue Number

SYMBOLS

05.0085L.ht	63	560-6453	66	E0502-1	45	E1550	29
05.0087L	63	560-6462	66	E0503	41	E1551-6	29
05.0088l.ht	63	560-6478	66	E0507-B	45	E1551G	29
05.0090L	63	5073-01	64	E0510	41	E1551X	29
05.0090l.ht	63	6226-ACAABZZZ		E0512	41	E1552	29
05.0740LED	63	-002	62	E0520	41	E1552-6	29
11.0031a	62	07179	50	E0560	37	E1559	27
11.0041a	62	10760	50	E0560E	37	E1560	27
11.0043a	62	10761	51	E1000	32	E1561	27
11.0055a	62	10762	51	E1002	32	E1562	27
11.0057a	62	10763	51	E1003	32	E1563	28
95-3901	62	10764	51	E1005	32	E1564	28
95-3930	62	10765	51	E1020	32	E1565	28
115-0012	66	10767	51	E1450-4	23	E1567	28
115-0051	66	10769	51	E1450-6	23	E1650	26
153-0052	65	10770	51	E1450G	23	E1651	26
153-0053	65	10771	51	E1450X	23	E1652	26
153-0072	65	10773	51	E1452	24	E1653	26
153-0073	65	92067	42	E1452-6	24	E1654B	26
161-0001	66	92394	46	E1455	24	E2100	21
174-0012	65	360186	44	E1455-4	24	E2100E	21
174-0051	65	360187	44	E1455-6	24	E2250H	17
301-5	33	368587	45	E1455B	24	E2350H	17
303-2	32	368687	45	E1455B-4	24	E2350H-DB	17
361-0	33	B		E1465	25	E2350HS	17, 56
361-1	33	BZ4212	15	E1465-4	25	E2400	21, 34
374-3	33	C		E1465-6	25	E2401	21, 29, 34
374-5	33	CBCA	14	E1465B	25	E2450H	17
374-6	33	E		E1465B-4	25	E2450HS	17, 56
443-0001	65	E0005-3C	45	E1475X	23	E2504	19
460-0011	66	E0017	45	E1502	33	E2504H	19
519-1341	66	E0020V	43	E1504	33	E2505-10FR	22
519-1709	66	E0021S	43	E1510	31	E2510H	20
550-5065	66	E0022W	43	E1511	31	E2515	18
				E1512	31	E2515H	18

Catalogue Number

E2515H-DA	18	E3772-36C	30	E97016BPS	40	LF1937	08
E2515H-DB	18	E3773-36C	30	E97017BPS	40	LF1944	08
E2515HS	19, 56	E3773-45C	30	E97018BPS	40	LF2019	11
E2516	18	E3774-36C	30	E97020BPS	40	LF3225	12
E2516H	18	E3774-45C	30	E97021BPS	40	LF3225C	12
E2516H-DA	18	E3810	56			LF4418	11
E2516HS	19, 56	E3815	56	F		LF5637	10
E2520H	52	E4051-CT	38	FM134	63	LF5644	10
E2530-3	53	E4052-CT	38	FT0021S	03, 43	LS0300 (Purple)	05
E2530-6	53	E4053-CT	38	FT0022W	03, 43	LS1020	09
E2530-28	53	E4054-CT	38	FT0510	16, 41	LS1037	09
E2532	53	E4055-CT	38	FT3000	16	LS1500	09
E2580-28	53	E4057-CT	38	FT3000DB	16	LS1520	09
E2581-28	53	E4058-CT	39	FT6003	05	LS3225C	12
E2583-28	53	E4059-CT	39	FT6009	03, 05		
E2608-6	22	E4060-CT	39	FTBRKIT	03	M	
E2750	48	E4062-CT	39	FTRCKIT	04	MLW-2623C-DC	64
E2780-28	49	E4073-CT	39			MLW-3225C Full	64
E2781-28	49	E6008	05	H		P	
E2781R-28ASP	48	E6008B	05	HRA6	36	PP120	64
E2782-28	49	E6009	05	K		PS00510	62
E2782R-28ASP	48	E6009B	05	KU-5167-902	64	PS00511	62
E2783-28	49	E6019	05	KU-5483-902	64		
E2783R-36ASP	48	E7507	35	KU-7211-902	64	R	
E2784-28	49	E7507-DB	35	L		RVFT10	59
E2784R-28ASP	48	E7509	36	LF0500 (Orange)	05	S	
E2786-28	49	E7509-B	36	LF1212	11	SCBA	14
E3305	22	E7510-25	35	LF1637	08	SCBIGA	14
E3310	22	E7510-25DB	35	LF1723	08	SCDA13	13
E3595	55	E7512	35	LF1737	08	SCDA26	13
E3635	58	E97011BPS	40	LF1744	08	SCDA39	13
E3645	58	E97012BPS	40	LF1823	08	SCDA48	13
E3770-36C	30	E97013BPS	40	LF1837	08	SCGAA	14
E3771-36C	30	E97014BPS	40	LF1844	08	SCSTA	14
E3771-45C	30	E97015BPS	40	LF1923	08	SE3695	54
				LF1930T	10	SEA3700	54

Catalogue Number

SEA3705	55	VLFTCRT	06
SEA3710	55	VLFX8GEN	01
SEA3715	55	VLLS10GEN	02
SEA3720	55		
SEA3725	55	W	
SEA3730	54	WOLFBRSET	04
SEA3741	54		
SEA3745	54	Z	
SEL7000A	57	Z0260	63
SEP5000	57	Z0280	63
SEP5015	57	Z0293	63
SEP6000	57	Z0499-01	63
SEP6015	57	Z5044-01	63
STORZBRSET	04	Z5045-01	63
		Z5048-01	64
T		Z5072-01	64
T0502-01	64	Z5074-01	64
T0504-01	64	Z5075-01	64
T0505-01	64	Z5077-01	64
T0506-01	64	Z5100-01	63
		Z5101-01	63
U		Z5102-01	63
UC8009	07, 50, 59	Z5103-01	63
UC8010	07, 50, 59	Z5104-01	63
UC8011	07	Z5105-01	63
UC8012	07	Z5106-01	63
UC8013	07, 59	Z5107-01	64
UC8015	07, 50	Z5108-01	64
V			
VL2610	19		
VL2610DB	19		
VL2610E	19		
VL2615	19		
VL2615DB	19		
VL2615E	19		
VLFT10GEN	01		

Product Name

SYMBOLS

3.5 × 2300 mm, light guide recommended for Xenon™ light sources > 300	63
3.5 × 3000 mm, light guide recommended for Xenon™ light sources	63
4.8 × 2300 mm, light guide for LED light source	63
4.8 × 2300 mm, light guide recommended for Xenon™ light sources	63
4.8 × 3000 mm, light guide for LED light source	63
5.0 mm HD laparoscope, 312 mm, 0° Wide angle	62
5.0 mm HD laparoscope, 312 mm, 30° Wide angle	62
10.0 mm HD laparoscope, 344 mm, 0° Wide angle	62
10.0 mm HD laparoscope, 344 mm, 30° Wide angle	62
10.0 mm HD laparoscope, 344 mm, 45° Wide angle	62
27-inch 2DHD touch monitor	

A

AccuVac™ Smoke Evacuation Attachment Extender	55
AccuVac™ Smoke Evacuation Attachment Tubing	58
Activation Kit Remote Control for the ForceTriad™ Energy Platform	04
Adult REM PolyHesive™ II Patient Return Electrode	35, 36
Argon cable ESU	51
ArgonPlus™ Handset	52
Argon™ 4 Plasma coagulator	50
Argon™ Adapter Valleylab™ E2520H Handpiece	50
Argon™ cable ESU	51
Argon™ Connection Hose	51
Argon™ Cylinder connection	51
Arthroscopic 45-Degree Angle Hook Electrode	31
Arthroscopic Angled Blade Electrode	31
Arthroscopic Right-Angle Hook Electrode	31

B

Bipol. Adapter International / ERBE™ Cable	46
Bipolar Resection Activation Kit for the ForceTriad™ Energy Platform	03
Bipolar Resection Cord Wolf	43
Bipolar Resection Footswitch	03, 05
BiZact™ Tonsillectomy Device	15
Button Switch Pencil	17, 18, 19, 56

C

Cart for 32-inch monitors (up to 19 kg)	64
Cart for two monitors	64
CleanCoat™ Laparoscopic Curved Spatula Electrode 36 cm, coated	30
CleanCoat™ Laparoscopic Curved Spatula Electrode 45 cm, coated	30
CleanCoat™ Laparoscopic Flat L-Hook Electrode 36 cm, coated	30
CleanCoat™ Laparoscopic Flat L-Hook Electrode 45 cm, coated	30
CleanCoat™ Laparoscopic Straight Spatula Electrode 36 cm, coated	30
CleanCoat™ Laparoscopic Wire J-Hook Electrode 36 cm, coated	30
CleanCoat™ Laparoscopic Wire L-Hook Electrode 36 cm, coated	30
CleanCoat™ Laparoscopic Wire L-Hook Electrode 45 cm, coated	30
CO ₂ gas connector, angled	64
Curved Iris Forceps	39
Curved Spatula Tip	48, 49
Cushing Bayonet Forceps	38, 39
Cushing Forceps	38
Cylindrical Tip	49

D

Disposable gas heating insufflation tubing with integrated filter	63
Disposable insufflation tubing with integrated filter	63
DISS adapter for universal gas connection	64
Dome Bipolar Footswitch	05

E

EDGE™ Coated Blade Electrode	23, 24
EDGE™ Coated Blade Extended Electrode	23, 24
EDGE™ Coated Needle Electrode	24, 25
EDGE™ Coated Needle Extended Electrode	24, 25
Electrosurgery Accessory Holster	21, 34

Product Name

F		
Flat L-Hook Tip	48, 49	
Flexible Electrode	53	
Fluorescence miniature microscope (MMS-IR)	65	
Footswitch	62	
Foot Switching Bipolar Cord	43	
Foot Switching Bipolar Forceps Cord	41	
Foot Switching Monopolar Cord	41, 44	
Foot Switching Monopolar Cord Valleylab™ Mode	16, 41	
Foot Switching Monopolar Laparoscopic Cord	41	
Foot Switching Pencil	17, 19	
Foot Switching Suction Coagulator	22	
ForceTriad™ Energy Platform Three-Pedal Footswitch	05	
Force TriVerse™ Electrosurgical Device	16	
Full HD 26-inch monitor	64	
G		
Gerald Bayonet Forceps	38	
H		
Hand Switching Suction Coagulator	22	
Hardy Bayonet Forceps with Stop	39	
HD 32-inch monitor	64	
Hose for CO ₂ central gas DISS:DISS, 1 m	64	
Hose for CO ₂ central gas DISS:DISS, 3.0 m	64	
Hose for CO ₂ central gas US:AGA, 3 m	63	
Hose for CO ₂ central gas US:AGA, 5 m	64	
Hose for CO ₂ central gas US:DIN, 3 m	63	
Hose for CO ₂ central gas US:DIN, 5 m	63	
Hose for CO ₂ central gas US:NF, 3 m	63	
Hose for CO ₂ central gas US:NF, 5 m	63	
Hose for CO ₂ central gas US:UNI, 3 m	63	
Hose for CO ₂ central gas US:UNI, 5 m	63	
Hose for CO ₂ gas bottle DIN:US, 1.5 m	63	
Hose for CO ₂ gas bottle ISO:US, 1.5 m	63	
Hose for CO ₂ gas bottle PIN:US, 1.5 m	63	
I		
Infant REM PolyHesive™ II Patient Return Electrode	35	
Iridium MMS drapes	66	
J		
Jewelers Forceps, Straight Tip	38	
L		
Laparoscopic Blade Electrode	53	
Laparoscopic Flexible Electrode	53	
Laparoscopic Modified Flat-L Electrode	53	
Laparoscopic suction irrigation pump with RFID	64	
Laparoscopic Tubing, 1/4" x 10'	55	
Laparoscopic Tungsten Blunt Needle Electrode	53	
LectroBrasive™ Tip Cleaner	21, 29, 34	
LED light source	63	
LigaSure Atlas™ 20 cm Hand Switching Instrument	09	
LigaSure Atlas™ Hand Switching Laparoscopic Instrument	09	
LigaSure™ 37 cm Retractable L-Hook Laparoscopic Device	10	
LigaSure™ 44 cm Retractable L-Hook Laparoscopic Device	10	
LigaSure™ Blunt Tip Laparoscopic Sealer/Divider 5 mm, nano-coated – 37 cm	08	
LigaSure™ Blunt Tip Laparoscopic Sealer/Divider 5 mm, nano-coated – 44 cm	08	
LigaSure™ Blunt Tip Open Sealer/Divider 5 mm, nano-coated – 23 cm	08	
LigaSure™ Curved Jaw Open Sealer/Divider Clamp Instrument	12	
LigaSure™ Curved Jaw Open Sealer/Divider Electrode Instrument	12	
LigaSure™ Exact Dissector, nano-coated	11	
LigaSure™ Impact Instrument, nano-coated	11	
LigaSure™ Maryland Jaw Laparoscopic Sealer/ Divider 5 mm, nano-coated – 23 cm	08	
LigaSure™ Maryland Jaw Laparoscopic Sealer/Divider 5 mm, nano-coated – 37 cm	08	

Product Name

LigaSure™ Maryland Jaw Laparoscopic Sealer/Divider 5 mm, nano-coated – 44 cm	08	Reger™™ Electrode Adapter	33
LigaSure™ Maryland Jaw Thoracic Laparoscopic Sealer/Divider 5 mm, nano-coated – 30 cm	10	Reger™™ Electrode Extension	33
LigaSure™ Single Pedal Footswitch	05	Reger™™ Needle Electrode; 20 × Ø 0,7 mm	32
LigaSure™ Small Jaw Instrument	11	Replacement Xenon™™ bulb	66
LigaSure™ V 20 cm Instrument	09	Reusable gas heating insufflation tubing, 100 uses	63
LigaSure™ V Laparoscopic Instrument	09	Rocker Switch Pencil	17, 18, 19, 20, 56
		Rocker Switch Pencil, Reusable	21
M		S	
Medtronic Reusable Bipolar Coagulation Scissors	40	Scoville-Greenwood Bayonet Forceps	38
Microsurgical Needle	26	Semkin Forceps with Stop	39
Microsurgical Needle With Safety Sleeve™	26	Sinter filter for universal gas connection	64
Monitor cart	64	Sonicision™™ 13 cm Curved Jaw Cordless Ultrasonic Dissector	13
Monopolar Adapter	45	Sonicision™™ 26 cm Curved Jaw Cordless Ultrasonic Dissector	13
Monopolar Footswitch	05	Sonicision™™ 39 cm Curved Jaw Cordless Ultrasonic Dissector	13
Multi-mode insufflator (maximum 50 L/min)	63	Sonicision™™ 48 cm Curved Jaw Cordless Ultrasonic Dissector	13
Multiple Return/S Cord Adapter	45	Sonicision™™ Battery Charger	14
Native full HD camera control unit	62	Sonicision™™ Reusable Battery Insertion Guide	14
Native full HD camera head	62	Sonicision™™ Reusable Battery Pack	14
Neonatal REM PolyHesive™™ II Patient Return Electrode	35	Sonicision™™ Reusable Generator	14
		Sonicision™™ Reusable Sterilization Tray	14
N		Stainless Steel Ball	28
NIST adapter for universal gas connection	64	Stainless Steel Ball Electrode	29, 32
		Stainless Steel Blade Electrode	29, 32
O		Stainless Steel Extended Blade Electrode	29
Opti4™™ Laparoscopic Handset	48	Stainless Steel Extended Needle Electrode	29
		Stainless Steel Fine-Needle Electrode	32
P		Stainless Steel Needle Electrode	29
Patient Return Electrode Cord/Clamp	37	Standard Bipolar Footswitch	05
Patient Return Electrode Cord/Clamp, Reusable	37	Standard Bipolar Footswitch (version B)	05
		Starter Kit for use with Storz™™ Resectoscopes	04
R		Starter Kit for use with Wolf Resectoscopes	04
RapidVac™™ Fluid Trap	59	Storz™™ Bipolar Resection Cord	03, 43
RapidVac™™ Interlink Cable	54		
RapidVac™™ Remote Switch Activator	54		
RapidVac™™ Smoke Evacuator	54		
RapidVac™™ Smoke Evacuator Filter	54		
RapidVac™™ Smoke Evacuator Foot Switch	54		
Reger™™ Angled Blade Electrode	33		
Reger™™ Cable for Ethicon PowerStar Bipolar Scissors for International 2-pole Models, 5,0 m	42		

Product Name

Straight Electrode Extension	33		
Straight Microsurgical Needle	26		
Straight Spatula Tip	49		
T			
Titanium Bayonet Forceps	39		
Tube set for irrigation, disposable	64		
Tube set for irrigation, reusable, 20 uses	64		
Tube set outflow, disposable	64		
Tube set, vacuum, disposable	64		
Tubing, 1/4" x 10'	55		
Tubing, 3/8" x 10'	55		
Tubing 7/8" x 10' with Sponge Guard and Prefilter Adapter	58		
Tubing with Sponge Guard, 7/8" x 10'	55		
Tungsten Loop	27		
Tungsten Loop Electrode	33		
Tungsten Sharp Needle Electrode	53		
Tungsten Square Loop	28		
Tungsten Wire Loop Electrode	32		
Twin gas bottle holder	66		
U			
Universal Monopolar Adapter	45		
Universal Mounting Cart	07, 50, 59		
Universal Mounting Cart Argon Gas Tank Kit	07, 50		
Universal Mounting Cart Cord Management Kit	07		
Universal Mounting Cart Drawer	07		
Universal Mounting Cart Overshelf	07, 50, 59		
Universal Mounting Cart Suspended Shelf	07, 59		
US adapter for universal gas connection	64		
USB keyboard English layout	62		
USB keyboard German layout	62		
V			
Valleylab™ FT10 Cart		06	
Valleylab™ FT10 Energy Platform		01	
Valleylab™ FX8 Energy Platform		01	
Valleylab™ Laparoscopic Smoke Evacuation System		57	
Valleylab™ LS10 Vessel Sealing Generator		02	
Valleylab™ Mode		16	
Valleylab™ Smoke Attachment		56	
Valleylab™ Smoke Evacuation Rocker Switch Pencil, Edge™ Blade Electrode 10' (3 m)		57	
Valleylab™ Smoke Evacuation Rocker Switch Pencil, Edge™ Blade Electrode 15' (4,6 m)		57	
Valleylab™ Telescoping Smoke Evacuation Rocker Switch Pencil, Edge™ Blade Electrode 10' (3 m)		57	
Valleylab™ Telescoping Smoke Evacuation Rocker Switch Pencil, Edge™ Blade Electrode 15' (4,6 m)		57	
Valleylab™ Universal Patient Return Electrode		36	
Valleylab Trigger™ Switch and Cord		41	
VS3 iridium camera control unit with iridium software license		65	
VS3 iridium camera holding arm		66	
VS3 iridium endoscope 5 mm long, 0° standard FOV		65	
VS3 iridium endoscope 5 mm long, 30° standard FOV		65	
VS3 iridium endoscope 10 mm long, 0° standard FOV		65	
VS3 iridium endoscope 10 mm long, 30° standard FOV		65	
VS3 iridium fluorescence camera (Camera-IR)		65	
VS3 iridium laser light source		66	
VS3 iridium light beam combiner		66	
VS3 light cable		66	
VS3 rolling cart 230V		66	
VS3 Xenon™ light source		66	
W			
Wand		55	
Wire J-Hook Tip		48, 49	
Wire L-Hook Tip		48, 49	
Wolf Bipolar Resection Cord		03, 43	

NOTES

A series of horizontal dotted lines for writing notes.

NOTES

A series of horizontal dotted lines for writing notes.

PORTFOLIO.
MORE ENERGY.
MORE PLACES.

PERFORMANCE.
OUR PRODUCTS
ARE DESIGNED
TO DELIVER
PERFORMANCE.

VALUE.
YOU DEMAND
VALUE.
SO DO WE.

1. Based on internal test report #R0042752 rev A, Marketing evaluation of surgeon experience using the Sonicision™ curved jaw cordless ultrasonic dissector. Feb.13–17, Feb. 28, March 3, May 16, 2017.

Medtronic

IMPORTANT: Please refer to the package insert for complete instructions, contraindications, warnings and precautions.

© 2020 Medtronic. All rights reserved. Medtronic, Medtronic logo and Further, Together are trademarks of Medtronic.

™* Third party brands are trademarks of their respective owners. All other brands are trademarks of a Medtronic company.
20-weu-energy-catalogue-2020-3815087

[medtronic.com/covidien/uk](https://www.medtronic.com/covidien/uk)