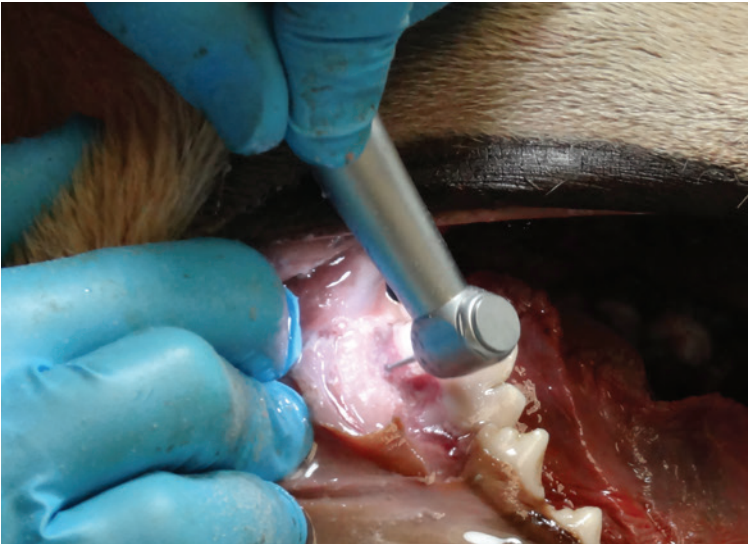


A close-up photograph of a dental procedure being performed on a dog's teeth. An orange handpiece is visible, working on the teeth. The dog's fur is dark and shaggy. The background is blurred.

# HANDPIECES

- ◇ LED High Speed Handpieces
- ◇ Specialist Handpieces
- ◇ Low Speed Polishing
- ◇ Low Speed Motors
- ◇ Contra Angles
- ◇ Straight Nose Cones
- ◇ Handpiece Oil
- ◇ Reprocessing Devices





## WHY iM3 LED LIGHT?

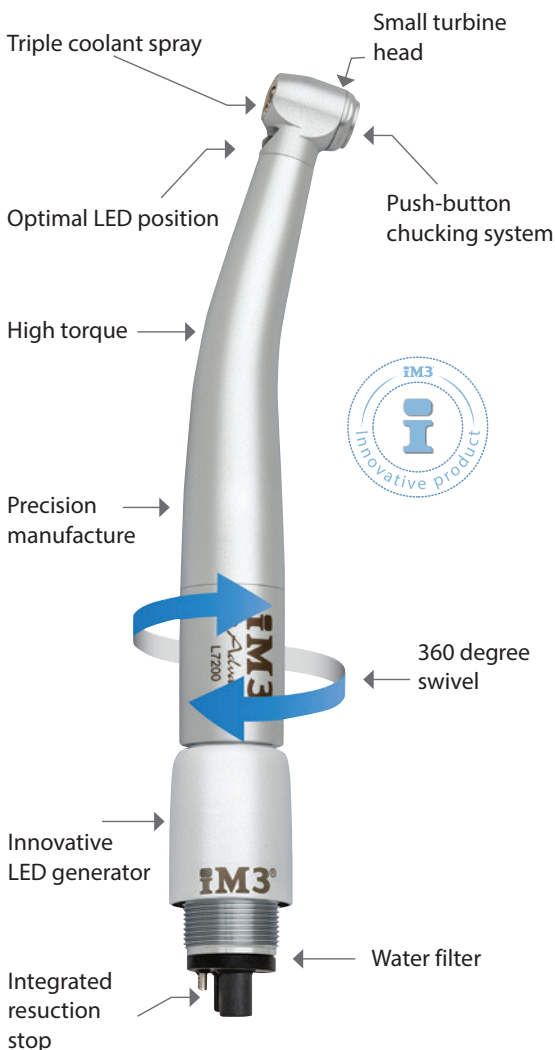
With a colour temperature of 5,500 K the iM3 Advantage LED hand piece produces a radiation spectrum that corresponds to daylight. The high colour rendering index (CRI 90) of the LED enables relaxed work thanks to daylight quality light and provides exceptional reproduction of natural colours and clear colour contrasts in the mouth.

## Primary High speed handpieces

### Reliable – Efficient – Precise – iM3 Advantage

#### Excellent ergonomics

Fatigue-free working thanks to easy 360° rotation of the turbine on the coupling, low overall weight and slender design. Unique handpiece design allows component replacement on site by the user.



#### iM3 Advantage Swivel LED High Speed Handpiece

All the advantages of the iM3 LED handpieces, now with a new MIdi head to provide greater access in small mouths!

- Self-generating LED illumination, no electricity – just needs air
- Daylight quality bright white light, unlike yellow fibre optic
- Largest illumination area of any dental handpiece
- Patented turbine design eliminates bacterial/viral suck back
- Autoclavable
- Triple spray coolant outlet for effective bur cooling
- One-year complete handpiece warranty including the turbine and chuck mechanism
- Swivel handpiece reduces fatigue and removes handpiece tension on the operator's wrist
- 360° swivel with quick release coupling housing the LED generator
- Fits all air driven dental machines with four hole connection

The L7300 includes the L7200 handpiece and the L7400 swivel coupling



“... it seems like such a simple concept, but one that significantly reduces the need to torque your wrist or constantly re-position the handpiece to achieve the appropriate angle of approach to a tooth. It also helps reduce the pull of the weight of the cord on your wrist...”

**Lina N. Mohamed, DVM**  
Interbay Veterinary Hospital  
Seattle, WA

Cat. Code

L7300



## iM3 Advantage Swivel LED High Speed Handpiece

L7200

Ideal for clinics who want multiple LED handpieces. This high speed handpiece is powered by the LED Advantage Swivel Coupling (L7400 - sold separately).

### Reliable - Efficient - Precise - iM3 Advantage

The Advantage LED High Speed (400,000 rpm) Handpiece and Swivel with inbuilt generator creates its own LED light. With a colour temperature of 5,500 K, the Advantage produces a radiation spectrum that corresponds to daylight. The high-colour rendering index (CRI 90) of the LED enables relaxed work thanks to daylight-quality light, exceptional reproduction of natural colours and clear colour contrasts in the mouth.

The Advantage minimizes fatigue by virtue of the easy 360-degree rotation of the handpiece on the coupling, the low weight and the slender design. The unique handpiece design also allows for component replacement on site by the user.

Triple coolant spray produces a mist for precision bur cooling and a patented hygienic head prevents aerosol particles from being sucked into the turbine.



## iM3 Advantage Swivel LED High Speed Coupling

L7400

Self-generating LED coupling allows the use of LED handpieces on dental machines without light. No wires required just air from the dental machine



Advantage handpiece plus an LED coupling with generator gives you an independent light. The integration of a generator in the swivel coupling (L7400) gives you a low-cost option of having multiple LED handpieces (L7200).

### PATENTED HYGENIC HEAD SYSTEM

Prevents aerosol particles from being sucked into the turbine



### PRECISION COOLING

The triple spray cools the treatment site from all sides



### SIMPLE BUR CHANGING

Easy operation of the push button or with the iM3 yellow iPush tool



## iPush Tool

The iPush Tool makes inserting a bur into a push button handpiece a breeze.

### iPush Tool, black

(fits Cat. No L5200, L5300)

### iPush Tool, yellow

(fits Cat. No L5200S, L5300S, L7100, L7200 and H2050)



L7000

L7050

Designed and Manufactured by iM3

EC Patent No. **001882788**, USA Patent No **29/398937**

## Non-Swivel Highspeed Handpieces

### Replaceable water filter

Prevents dirt particles from entering the turbine



### iM3 Advantage non-LED High Speed Handpiece

L7100

Triple Coolant outlet for optimal bur cooling

- Push button bur changing
- Patented turbine design eliminates bacterial/viral suck back
- Replaceable water filter prevents dirt particles from entering turbine
- Autoclavable
- Supplied with yellow iPush tool for easy bur changing

One year complete handpiece warranty. Longest turbine and chuck warranty in the industry!



### iM3 High Speed Handpiece

H3000

iM3 High Speed Handpiece offers endurance and power. Its sleek design provides maximum visibility of the operating field and easily reaches all areas of the oral cavity.

- Unsurpassed durability
- Exceptional Longevity
- Push Button Chuck

## Specialist highspeed handpieces



L8015



L7400

### Feline LED High Speed Handpiece

L8015

- Small head for Feline
- LED light
- Single coolant spray
- Works with advantage swivel coupling L7400 – **Sold separately**
- Only for use with Feline Length FG burs
- Autoclavable handpiece



L8010



L7400

### 45° LED High Speed Handpiece

L8010

This handpiece possesses a unique 45° angled head specially designed to access hard-to-reach areas for sectioning and extraction of the most caudal and other impacted teeth

- LED light
- Triple coolant spray
- Works with advantage swivel coupling L7400 – **Sold separately**
- Only for use with Surgical Length FG burs
- Autoclavable handpiece



## iM3 High Speed Handpiece - 5x LED - Roto with High Speed Swivel Coupling

L8085

Highspeed handpiece with 5 piece Ring LED+. Avoids any shadow and quintuple spray that keeps the cooling at all times on the clinical field. Lightweight and ergonomic with scratch-proof coated surface and ceramic bearings, it increases the strength and life of the instrument, without overheating or noise. Great performance 24W of power and speed of 360.000rpm in a head of only 11,5mm diameter.

### Advantages

- 100% shadow-free illumination thanks to the world's first LED+ ring
- Even cooling with the five-fold spray
- Longer life and extremely quiet operation due to ceramic bearings
- Sterilisable and thermo-disinfectant
- Hygienic head system
- Scratch-resistant surface improves aesthetics even more – and extends their life
- Fatigue-free work
- Thermo washer disinfectable and sterilizable

Includes L746H coupling and is for use on 6-hole air lines such as the iM3 Pro S and iM3 Pro X.

*Please note this handpiece is not compatible with L7400 coupling.*



## iM3 High Speed Handpiece - 5x LED - Multi-flex

L8070

This dental turbine is characterised by high performance, quality, optimal ergonomics and outstanding value for money.

- 5-hole spray
- Head size Ø 13 mm
- 22 W, 330,000 rpm
- FG burs Ø 1.6 for bur lengths up to 25 mm
- 100% shadow-free illumination thanks to the world's first LED+ ring
- Even cooling with the five-fold spray
- Longer life and extremely quiet operation due to ceramic bearings
- Sterilisable and thermo-disinfectant

*This handpiece utilizes 'Multi-flex' fitting and requires a Multi-flex fitting coupling (L2014).*



## iM3 Kavo MultiFlex Fitting Coupling

L2014

- Prevents dirt particles from entering the turbine
- for 6-hole air lines.



## Low speed handpieces

Cat. Code



### iM3 Advantage Low Speed Motor

L6200

Advantage Low Speed Motor is ergonomically designed to be more user friendly. The motor is light weight and shorter than conventional low speed motors. Maximum speed 25,000 rpm.

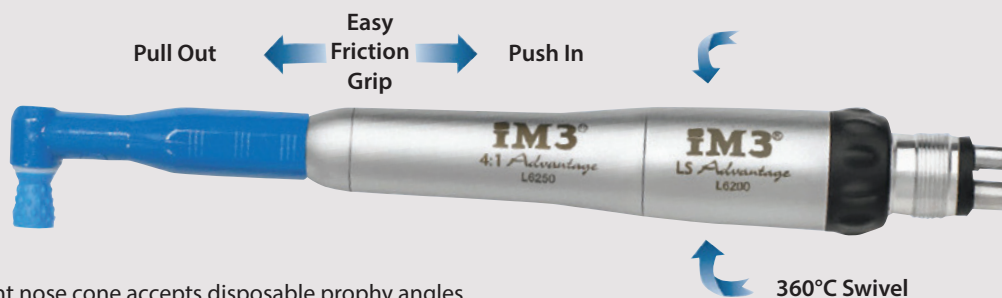
- Complete one-year warranty, including turbine
- The LS motor will fit any four-hole connection
- Forward only
- Autoclavable



### iM3 4:1 Advantage Straight Nose Cone

L6250

- Reduces the polishing speed
- Simply push on Rock & Roll Oscillating Prophy Angle, no chuck ring required
- Fits any low speed motor
- Autoclavable, one-year warranty



4:1 straight nose cone accepts disposable prophy angles.  
Picture shows Cat. Code L6200 and L6250

### Internal Water Forward & Reverse Low Speed Motor

L2010



- Standard four-hole connection
- Internal water supply when connected to a dental machine with LS water
- Suitable for running contra-angle and straight handpieces with internal water
- Forward/reverse and speed adjustable
- Autoclavable 135 °C

### External Water Forward & Reverse Low Speed Motor

L2011



- Standard four-hole connection
- Provides external water supply when connected to a dental machine with LS water
- Suitable for running contra-angle and straight handpieces with external water
- Forward/reverse and speed adjustable
- Autoclavable 135 °C

## Low Speed Motors

Cat. Code



### F/O Internal Water F&R Low Speed Motor

L8020

- Adjustable speed and direction
- Generates fibre optic light for compatible contra angles and nose cones
- Supplies internal coolant for contra angles
- Autoclavable
- Maximum speed 24,000 rpm
- Four-hole connection
- One year warranty



### iM3 Forward & Reverse Low Speed Motor

L6980

- Standard four-hole connection
- Forward/reverse and speed adjustable
- No water supply
- Autoclavable 135 °C



### iM3 Add-on E-Motor with LED Screen

MF100M

The iM3 Add-on E-Motor with LED screen allows any iM3 air driven highspeed line or SW low speed line to be converted into a high quality, ergonomic electric micromotor that is operated by your standard iM3 foot pedal.

It is particularly small and surprisingly light, is comfortable to hold and in addition to the consistent high power, also scores extra points with its features such as LED technology, long service life and quiet operation.

#### Your advantages at a glance:

- Particularly small
- Optimally balanced
- 25% lighter, 15% shorter
- LED technology
- Constantly high power
- ISO Short coupling
- Low maintenance and preserved value
- Quiet and low vibration

**The Brushless EM - 12 L electric motor** offers the perfect balance of performance and ergonomics. Its low weight and low-vibration operation simplify day to day treatment workflows considerably.

**The Sensor** - Controlled drive technology ensures precise speeds across the entire speed range. The integrated LED lights up the treatment site with daylight-quality illumination



## Low Speed Contra Angles



### 1:1 LED Internal Water Low Speed RA Contra Angle

L2004

- Self generating LED light and internal water
- Connects to any air driven or electric low speed motor
- Single coolant spray, head size diameter 10.1 mm
- 1:1 - no speed reduction, push button chuck system, accepts RA burs
- Use with LS Motor with Internal Water (L2010).
- Autoclavable 135 °C



### 1:1 Internal Water Low Speed RA Contra Angle

L2005

- Internal water
- Connects to any air driven or electric low speed motor
- Single coolant spray, head size diameter 10.1 mm
- 1:1 - no speed reduction, push button chuck system, accepts RA burs
- Use with LS Motor with Internal Water (L2010).
- Autoclavable 135 °C



### 1:1 Low Speed RA Contra Angle

L2007

- Connects to any air driven or electric low speed motor
- Head size diameter 10.1 mm
- 1:1 - no speed reduction, push button chuck system, accepts RA burs
- Autoclavable 135 °C



### 1:1 Low Speed FG Contra Angle

L2006

- Connects to any air driven or electric low speed motor
- Head size diameter 10.1 mm
- 1:1 - no speed reduction, push button chuck system
- Accepts FG burs
- Autoclavable 135 °C.



### 2:1 Low Speed RA Contra Angle

L2016

- Connects to any air driven or electric low speed motor
- Head size diameter 10.1 mm
- 2:1 - half speed reduction, push button chuck system, accepts RA burs
- Autoclavable 135 °C





## 4:1 LED Internal Water Low Speed RA Contra Angle

L2002

- Self generating LED light and internal water
- Connects to any air driven or electric low speed motor
- Single coolant spray, head size diameter 10.1 mm
- 4:1 - quarter speed reduction, push button chuck system, accepts RA burs
- Use with LS Motor with Internal Water (L2010).
- Autoclavable 135 °C



## 4:1 Low Speed RA Contra Angle

L2008

- Connects to any air driven or electric low speed motor
- Head size diameter 10.1 mm
- 4:1 - quarter speed reduction, push button chuck system, accepts RA burs
- Autoclavable 135 °C



## 16:1 Low Speed RA Contra Angle

L2015

- Connects to any air driven or electric low speed motor
- Head size diameter 10.1 mm
- 16:1 - 1/16 speed reduction, push button chuck system, accepts RA burs
- Autoclavable 135 °C



## 1:4.5 LED Internal Water Low Speed FG Contra Angle

L2001

- Self generating LED light and internal water
- Connects to any air driven or electric low speed motor
- Triple coolant spray, head size diameter 10.1 mm
- 1:4.5 - Speed increasing, push button chuck system
- Accepts FG Burs
- Use with LS Motor with Internal Water (L2010).
- Autoclavable 135 °C



## 4:1 Contra-Angle - K-Reamers

L2017

This 4:1 Contra Angle supports your work with proven hand files, except that it is motorized. It makes your work significantly faster and virtually fatigue-free. Fast, efficient and convenient

Assists you in the preparation of the root canal, with a oscillating motion of approximately 60°.

The small head ensures optimum visibility in the molar area in particular.

### Your advantages at a glance

- Proven hand files can still be used
- Oscillating file movements
- Fast and fatigue-free working
- Thermo washer disinfectable and sterilizable

## Low Speed Fibre Optic Contra Angles

Cat. Code

These high-end, low speed, fibre-optic handpieces work great with the micromotors on iM3 Pro S and iM3 Pro X dental stations. They can also be used on air-driven units using our special Forward and Reverse Fibre Optic Internal Water Low Speed Motor (L8020).



### 1:1 Fibre Optic Internal Water RA Contra Angle

L2022

- Fibre optic light and internal water
- Connects to any air driven or electric low speed motor
- Single coolant spray, head size diameter 10.1 mm
- 1:1 - no speed reduction, push button chuck system, accepts RA burs
- Light requires Fibre Optic Low Speed Motor (L8020)
- Autoclavable 135 °C



### 1:1 nano Fibre Optic Internal Water RA Contra Angle

L8035

- Nano length handpiece - 10% lighter and smaller than L8030
- Fibre optic light and internal water
- Connects to any air driven or electric low speed motor
- Single coolant spray, head size diameter 10.1 mm
- 1:1 - no speed reduction, push button chuck system, accepts RA burs
- Light requires Fibre Optic Low Speed Motor (L8020)
- Autoclavable 135 °C



### 1:1 Premium F/O Internal Water RA Contra Angle

L8040

- Fibre optic light and internal water
- Connects to any air driven or electric low speed motor
- Single coolant spray, head size diameter 9.6 mm
- 1:1 - no speed reduction, push button chuck system, accepts RA burs
- Light requires Fibre Optic Low Speed Motor (L8020)
- Autoclavable 135 °C



### 1:5 Fibre Optic Internal Water FG Contra Angle

L2019

- Fibre optic light and internal water
- Connects to any air driven or electric low speed motor
- Quattro coolant spray, head size diameter 10.1 mm
- 1:5 - Speed increasing, push button chuck system
- Accepts FG Burs
- Light requires Fibre Optic Low Speed Motor (L8020)
- Autoclavable 135 °C



### 1:5 nano Fibre Optic Internal Water FG Contra Angle

L8050

- Nano length handpiece - 10% lighter and smaller than L8030
- Fibre optic light and internal water
- Connects to any air driven or electric low speed motor
- Quattro coolant spray, head size diameter 10.1 mm
- 1:5 - Speed increasing, push button chuck system
- Accepts FG Burs
- Light requires Fibre Optic Low Speed Motor (L8020)
- Autoclavable 135 °C

## Polishing handpieces

Cat. Code



### 4:1 Polishing Contra-Angle - RA

L2021

- For cups, brushes and Snap-on Adapter with 2.35 mm shaft
- Contra-angle 4:1
- Polishing contra-angle handpiece for cups, brushes and Snap-on Adapter with 2.35 mm



### 4:1 Polishing Contra-Angle - Screw-in

L2023

- For all common screw-in cups, brushes and snap-on adaptor
- Contra-angle 4:1
- Proxeo contra-angle handpieces for screw-in cups and brushes



### iM3 4:1 Reciprocating Polishing Contra Angle

L6824

Polishing contra angle handpiece

- 60° reciprocating motion at 4:1 speed
- Push button chuck system
- Requires mandrel (MAND06) and snap-on cups (P4640), not included



### iM3 Low Speed Complete Polishing Handpiece

H2060

Complete motor and nose cone in one.

- Supplied with three changeable nose shrouds for easy cleaning
- Swivel connection allows freedom of movement
- For use with disposable prophylaxis angles, L7460 or L7466



## Straight Nose Cones

Cat.Code



### iM3 1:1 Straight Nose Cone

L6860

- 1:1 - No speed reduction
- Uses HP burs for rabbit and orthopaedic work
- Ideal for grinding molar teeth in rabbits with long HP diamond burs
- Fits any low speed air motor or electric motor
- Autoclavable 135 °C

### 1:1 Fibre Optic Internal Water RA Straight Nose Cone

L8025



- 1:1 straight nose cone with twist tension chuck system, fibre optic light and internal water.
- Requires motor with fibre optic for light to work
- Accepts all RA and HP burs 2.35mm diameter. Autoclavable 135 °C

### iM3 1:1 Advantage LED Surgical Straight Nose Cone

L7800

The 1:1 Advantage LED fits any low speed motor or electric micromotor

- Self-generated LED bright white daylight, produced by the drive shaft of the low speed air motor or electric micromotor
- Large illumination area providing outstanding visibility
- Coolant delivery tube, removable/adjustable sterile coolant to any bur length
- Ideal for rabbit dentistry and orthopaedic work
- Autoclavable
- Takes HP burs and 3/32" drills



“The light on the 1:1 LED handpiece is magic. I used it last week on a few wombats from Australia Zoo (we see them every 3 months) and it made our job a lot easier.

Previously as you know we tried to use things like overhead lights, otoscopes and even the light source from an endoscope. Nothing compares to this device.”

**Dr Aaron Forsayeth BVSc (Hons) MACVSc**  
(Veterinary Dentistry)  
Australian Veterinary Dental Society President



## iM3 Advantage Handpiece Oil – 30 ml

Cat.Code  
MD30

- Intelligent oil and short maintenance intervals result in longer lifespan
- MD-30 is an all synthetic oil specifically designed for the increased workload of veterinary dentistry
- MD-30 contains no toxic constituents, is physiologically harmless and environmentally compatible
- MD-30 also safeguards the durability of plastic parts, coatings and seals.
- All iM3 Advantage handpieces must be lubricated with MD-30



## F1 Advantage Handpiece Oil - Aerosol

MD400

All the great advantages of Advantage Handpiece Oil with the added convenience of a compressed aerosol. Saves time and guarantees that oil makes it through the entire handpiece in a short spray. (Spray cap required, sold separately.)



## WL-clean - 500 ml

HPCLN1

### Solution ready for use

For the non-protein fixing inner cleaning prior to disinfection/sterilization of medical and dental hollow part instruments such as turbines, hand pieces, contra-angles, internally cooled instruments and endoscopes.

WL-clean is a medical device of class I. The proof of suitability for cleaning has been given according to the series of standards EN ISO 15883 and according to the specifications of the German Society for Sterile Goods Supply (DGVS) – and has been confirmed by an expert's report. Tested and approved amongst others by KaVo, NSK, SciCan, W+H. Works great as disinfection prior to cleaning in iM3 HCR-100

## 4 pack of 500ml cans, equates to 2 ltr

HPCLN4

## MD 40 Spray Cap - Swivel Handpieces

MD4030

For oiling and cleaning iM3 Advantage Swivel High Speed handpieces.

## MD 40 Spray Cap - E-Type Handpieces

MD4020

For 1:1 SNC LED and Low Speed Attachments

## MD 40 Spray Cap - Swivel Handpieces

MD4010

For High Speed and Low Speed Handpiece

*Adapters for other style connections available on request*



MD4030



MD4010



MD4020



## MD-500 Oil

ST312

- Lubricating handpiece oil for use in the HCR-100 and Assistina 301.
- Only use iM3 approved oil in iM3 handpieces.
- Warranties invalidated if non approved oil used.
- 500 ml bottle.

## MC-1000 Cleaning Solution

ST313

MC-1000 is a cleaning solution for high speed handpieces, straight and contra-angle handpieces, and air motors. For use with the Assitina 301 Plus. 1 litre bottle.

## iM3 HCR-100

Introducing iM3 HCR-100, Handpiece Lubrication Unit:

- Oil up to three handpieces at once
- E-Type fittings for low speed contra angle or nose cone
- Two fittings for four- or six-hole high speed handpieces
- Adapters included for two-hole handpieces
- Easy-to-use three program system: 1-, 1.5- and 2-minute cycle options
- Powered by your dental units compressor
- Small foot print - 22 cm x 27 cm
- Low volume operation
- Supplied with 500 ml of MD-500 F1 Lubricating oil (only use MD-500 oil)

Properly oiled handpieces have an exponentially longer expected working life. Ideally, a handpiece should be lubricated every five minutes of actual operating time. With the simple and fast HCR-100, it becomes practical and possible to maintain all your handpieces at peak efficiency.



## Assistina One Maintenance System

ST001

**Fast, thorough and easy to use:** Assistina One speeds up daily operations and facilitates dental handpiece care.

With the shortest cycle time in its class and its high-quality care results, the innovative maintenance solution is a top dental device – designed for top dental professionals.

### Assistina One + 1 Quick ISO + 1 Quick RM

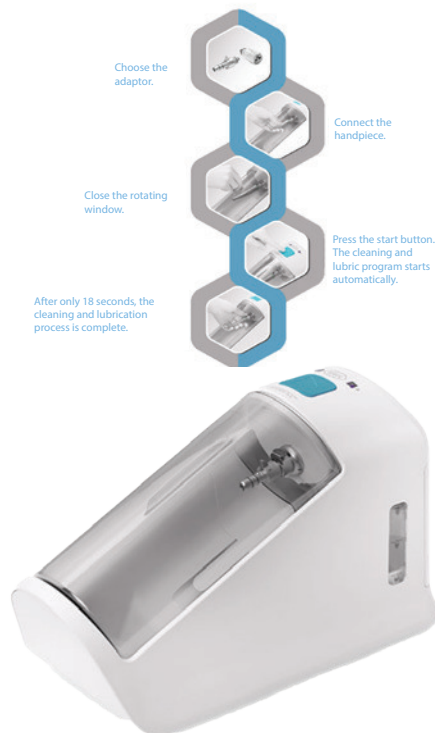
- Air connection hose (2m)
- One Care Set
- 1 Quick ISO adaptor
- 1 Quick RM adaptor

The entire lubrication and spray channel cleaning process only takes 18 seconds, making the Assistina One the fastest maintenance solution in its class.

It only works with compressed air; no electric power supply is needed.

The unit is set up and ready to go in no time at all.

Together with the one-touch start button and convenient cartridge management for refilling oil and cleaning liquids, the Assistina One is a modern maintenance solution for dental practices with high standards in handpiece care.



## Assistina One Care Set

ST002

Consumables are easy to replace without any tools.

### Includes:

- 1 cartridge of Activefluid (200 ml)
- 1 cartridge of Service Oil F1 (200 ml)
- 1 HEPA filter







### Assistina Twin Maintenance System

The Assistina Twin can be tailored to meet the individual needs of your veterinary practice. It can process up to 360 instruments per hour not just due to the innovative procedure with a short processing time, but also, thanks to its ergonomic design and wide range of adaptors

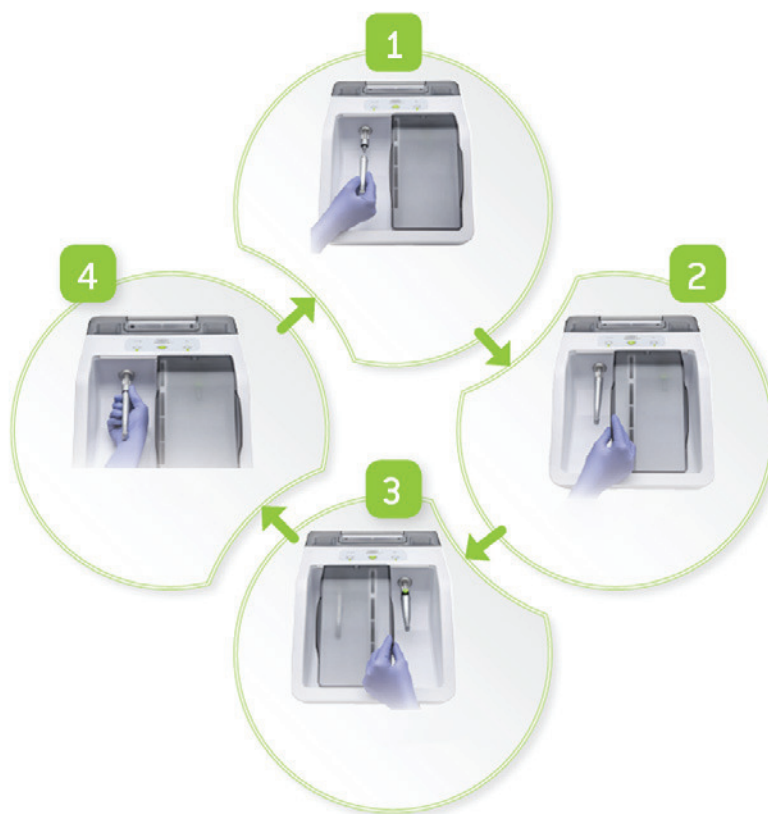
- Assistina Twin Maintenance System
- **Process:** Cleaning the spray channels, lubrication
- **Suitable for:** Straight and contra-angle handpieces, turbine handpieces, air scalars, air motors
- **Supply voltage:** 100 – 240 V AC

The Assistina Twin is unique among maintenance devices because of its innovative duo-chamber system, record time lubrication and the environmentally friendly Care Set



#### GROUNDBREAKING TECHNOLOGY

Thorough and comprehensive lubrication of the gear parts (orange) and cleaning of the spray channels (green) owing to the innovative oil nebulization technology



### SPECIFICATIONS

**MAXIMUM POWER CONSUMPTION** 18 VA

**AIR CONSUMPTION** Approx. 40 NI/min.

**OPERATING PRESSURE** 5 – 10 bar (controlled via an integrated, automatic pressure controller)

**DIMENSIONS (W X D X H)** 297 x 435 x 190 mm

**WEIGHT:** 3,5 kg

**CAPACITY** 200 ml W&H Activefluid cleaning solution

200 ml W&H Service Oil F1

1. Connect the instrument in chamber 1.
2. Close chamber 1 and start process.
3. Connect the second instrument and close chamber 2 as soon as the process in chamber 1 is complete.
4. Remove instrument from chamber 1 and repeat steps 1 and 2.