

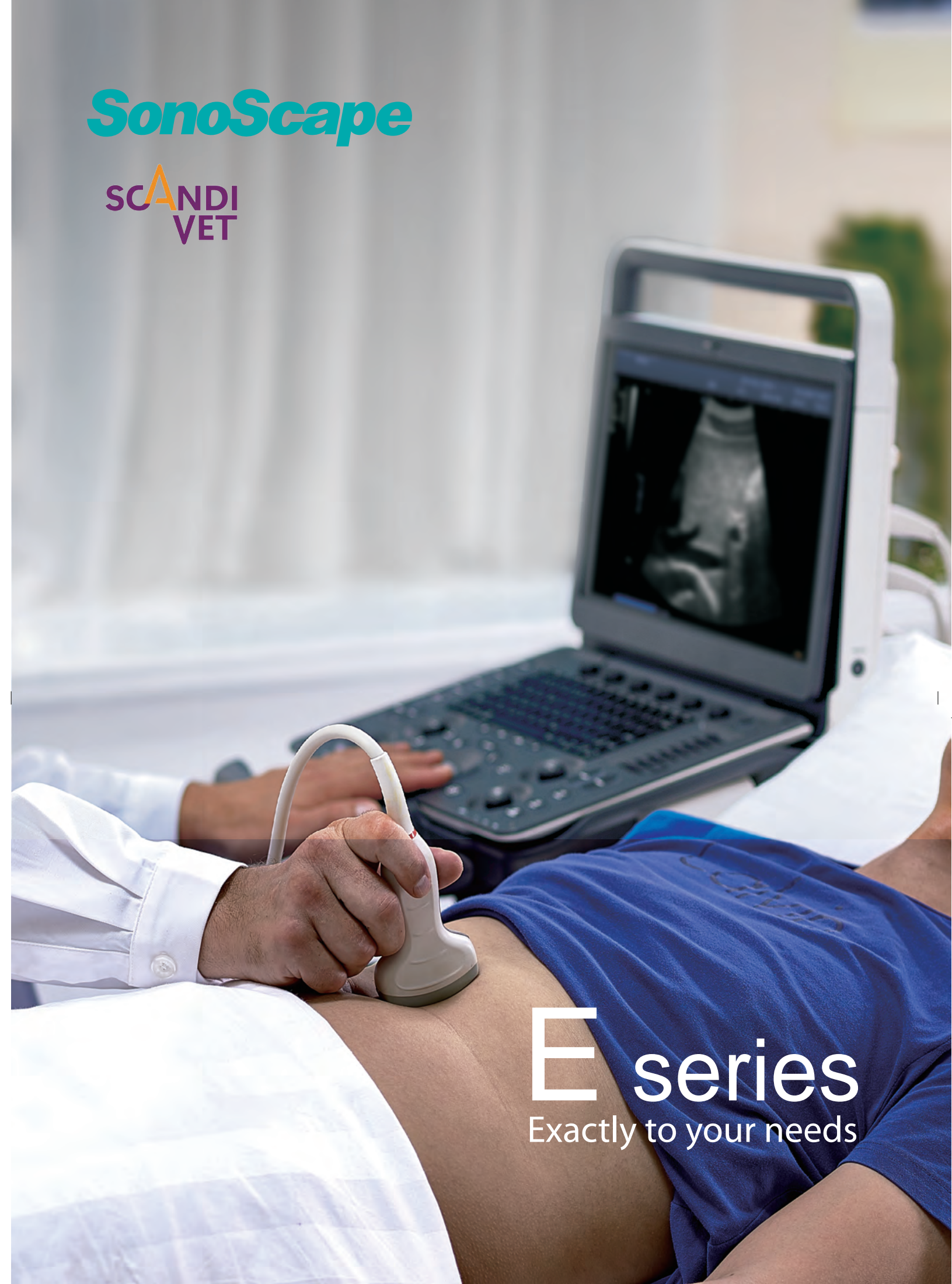


SonoScape

Yizhe Building, Yuquan Road, Shenzhen, 518051, China
Tel: 86-755-26722890 Fax: 86-755-26722850
E-mail: market@sonoscape.net www.sonoscape.net

SonoScape

SCANDI
VET



E series
Exactly to your needs



E series

- Light Weight
- Compact Size
- Showy Design

- ✓ Quick boot up
- 15.6" 15.6" high resolution LED monitor
- Wide angle horizon and anti-glare screen
- Tilting angle monitor
- light Compact size and light weight
- High capacity battery
- Intelligent & Backlit control panel
- 3 optional transducer connector ports

