



DEVELOPERS

iM3® CR72.0 VET

DENTAL X-RAY

FEATURES & BENEFITS

- ✓ Improved image plate feeding technique reducing operator errors and improving workflow
- ✓ Unsurpassed highest resolution 40 LP/mm theoretical, with 25 LP/mm true resolution. Which is up to double the TRUE resolution of other CR & DR Systems
- ✓ Large range of flexible thin plates allow for easy positioning, ranging from sizes 0 (2.2 x 3.5 cm) to size 5 (5.7 x 9.4 cm).
- ✓ Fast processing times, less than 8 sec for a size 2 plate (at standard resolution)
- ✓ Possible to get a full mouth scan of large dog with only 6 scans
- ✓ Unique design protects unit and radiographs from dust, hair, and particles that can reduce image quality
- ✓ Swappable Plate Feeders mean the CR 72.0 accepts all image plate sizes from 0 - 5, including R3 Rabbit Plates.

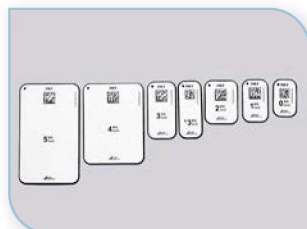


Cat. Code
X7700

Offering pioneering AI functions, easier workflow, simultaneous scanning, standalone mode and much more!



Interchangeable inserts available for all intraoral image plates



Full Range of Plate sizes available



Smart Reader optional

iM3 X-Ray Developers

iM3 Developers use software specific to veterinary dentistry, and have the largest range of plate shapes available to the market. Developers come preloaded with Vet-Exam Pro software, providing superior image resolution quality, and are fully DICOM compliant, ensuring easy export of data. Precision made by German manufacturers, with a two year warranty, and iM3 technical support provided. iM3 R3 plate for Rabbits also works with these scanners.

SPECIFICATIONS

RESOLUTION	OPERATING TIME	PLATES SIZES
25 LP/mm actual (40 LP/mm theoretical)	8 sec	0 – 5 plus R3
NETWORK	WARRANTY	SOFTWARE
Single PC or Windows Server* database install with workstations PC's	2yrs	Vet Exam Pro
DIMENSIONS Height x Width x Depth	TECHNICAL SUPPORT	DICOM COMPLIANT
24.9 x 21.1 x 25.8 cm Weight 5kg	✓	✓

*Windows Server 2019 or greater required

SMART READER VET

NEW



DENTAL X-RAY

Smarter workflows with CR72.0
automation to make your work more relaxed

- » Multiple dental stations running off a single scanner
- » Increased workflow
- » More dental examinations

1. Assign the image plate

The iM3 Smart Reader can be used to assign image plates to a patient in Vet Exam Pro. This puts **CR72.0** in ready for image acquisition mode.



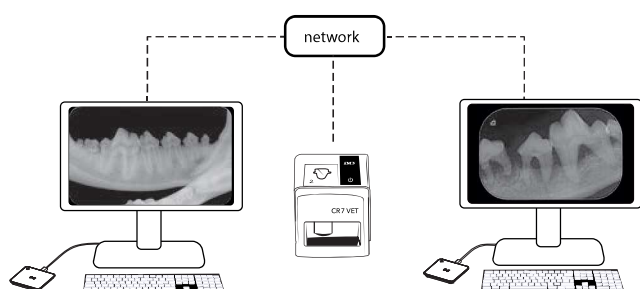
2. Scan the image plate

Now scan image plates from different patients in any sequence, one after the other.



3. Assess the X-ray image

Vet Exam Pro automatically assigns the X-ray images to the correct patients.



Smart Reader VET Setup

The new Smart Reader VET allows for increased dental workflows without the need for additional scanners. In this example two practitioners can work on separate stations, each has their own computer and their own Smart Reader VET allowing them to share a single iM3 CR 72.0 VET with maximum efficiency.

Contact iM3 or local distributor to discuss your optimal setup.



POSITIONING

iM3 Complete X Ray

Cat. Code: X8500

1 ANGLE GUIDES & ADJUSTABLE BISECTING ANGLE GUIDE

Angles of X-ray beam effect shape and size of shadow. To isolate detail for examination and avoid squashed or stretched images, use our pre-set guides which provide Angle, Distance, and Position. Set-angle positioning guides, sizes 30°, 45°, and 55° and now, New 70° angles provide the option of an alternate canine and incisor projection which is useful for some breeds.



3 BITE GUARDS

Protect your plates against any bite marks or damage to achieve the ideal scan. Polycarbonate IP bite protector plate holders, sizes 2, 4 and 5.

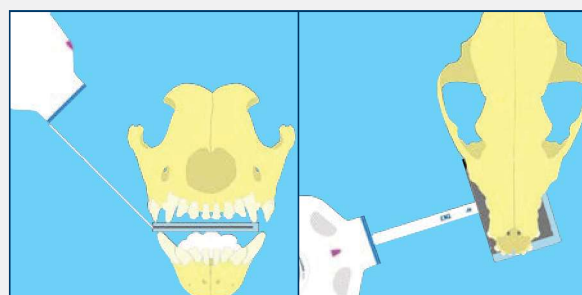


**FULL MOUTH
OF LARGE DOG
COMPLETED IN ONLY
6 SCANS**

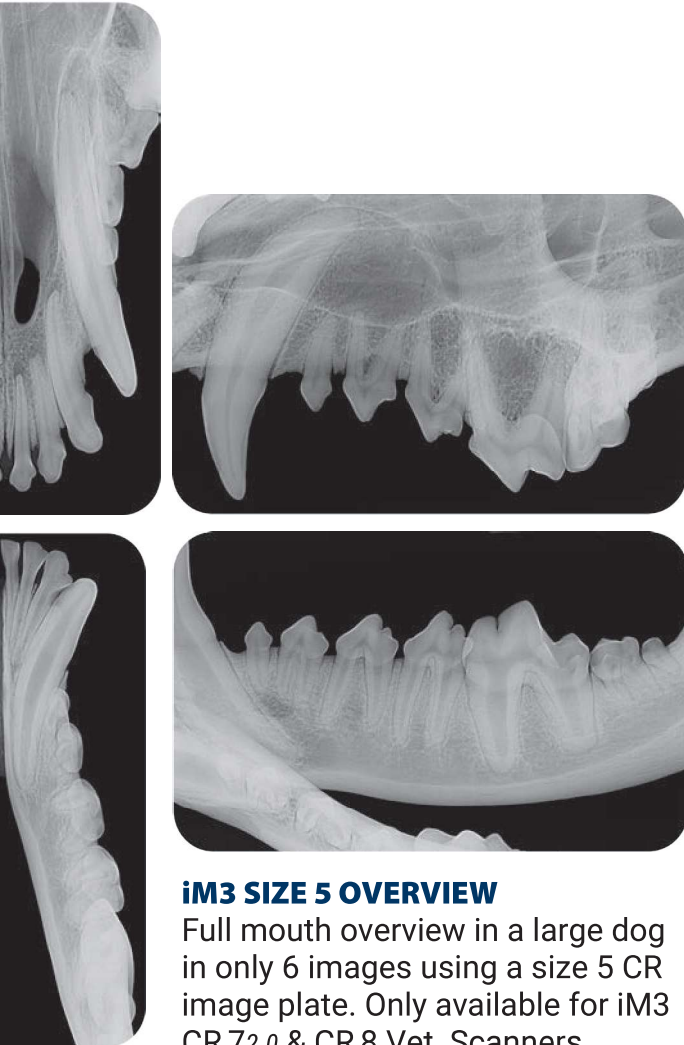
Positioning X-Ray Kit

Cat. Code
X8500

iM3 Positioning kit for use in conjunction with our **CR 72.0** and **CR 8** scanners. As animals don't have an arch within the roof of their mouths, it is not easy to get the right angle, so iM3 has come up with the solution in the form of a positioning kit, which takes the guess work out of dental X-ray. Our present guides provide relative: angle, distance and position. See our *iM3 How to use video here or on the website, for a step by step guide.*



Positioning Kit



iM3 SIZE 5 OVERVIEW

Full mouth overview in a large dog in only 6 images using a size 5 CR image plate. Only available for iM3 CR 72.0 & CR 8 Vet Scanners

2 POSITIONING POSTERS

Dog, cat and rabbit positioning posters have larger and easy-to-follow illustrations.

